



Rollback Rx 8.0

User's Guide



The information contained in this document is subject to change without notice. Horizon DataSys, Inc Corporation assumes no responsibility or obligation of any kind for any errors contained herein or in connection with the furnishing, performance, or use of this document.

Trademarks or Service Marks

Rollback Rx is a registered trademark of Horizon DataSys, Inc Corporation in the Canada.

Other brands and products are trademarks of their respective holders.

Copyright

This document is a copyright © 2007 of Horizon DataSys, Inc Corporation. All rights reserved. No part of this document may be reproduced in any form, including photocopying or translation to another language, without the prior written consent of Horizon DataSys, Inc Corporation.

License and Warranty

The software that accompanies this license (the "software") is the property of Horizon DataSys, Inc. and is protected by international copyright laws. Horizon DataSys holds the trademark of Rollback Rx. You will have certain rights to use the software after your acceptance of this license.

You May

Install only one copy of the software under one license.

Make only one copy of the software for archival purposes.

Transfer the software on permanent basis to another entity, provided that you retain no copies of the software to Horizon DataSys Corporation.

You May Not

Rent or lease any portion of the software.

Reverse engineer, decompile, disassemble, modify, translate, make any attempts to cover the source code of the software or create derivative works from the software.

Use a previous version or copy of the software after you have received a replacement set or an upgraded version of the software.

Limited Warranty

Horizon DataSys Corporation warrants that the media on which the software is distributed will be free from defects for a period of thirty (30) days from the delivery date of the software. Horizon DataSys does not warrant that the software will meet your requirements or that the software will be error-free.

Disclaimer of Damages

IN NO EVENT WILL HORIZON DATASYS BE LIABLE TO YOU FOR ANY SPECIAL, CONSEQUENTIAL, INDIRECT OR SIMILAR DAMAGES, INCLUDING ANY LOST PROFITS OR LOST DATA ARISING OUT OF THE USE OR INABILITY TO USE THE SOFTWARE EVEN IF HORIZON DATASYS HAS BEEN ADVISED OF THE POSSIBILITY OF SUCH DAMAGES. IN NO CASE SHALL HORIZON DATASYS'S LIABILITY EXCEED THE PURCHASE PRICE FOR THE SOFTWARE.

The disclaimers and limitations above apply regardless of whether you accept the software.

Introduction

Thank you for choosing Rollback Rx Professional, the easiest and fastest PC rollback solution in the market. This User's Guide is provided to you to familiar yourself with the product. You can find the complete list of all the product's features and a brief description of each feature in this document. It is highly recommended that you read this User's Guide carefully before setup and start to explore Rollback Rx Professional. The information contained in this User's Guide is subject to change without notice. HORIZON DATASYS assumes no responsibility or obligation of any kind for any errors contained herein or in connection with the furnishing, performance, or use of this document.

Rollback Rx is the pioneer of the new breed of PC instant recovery software. Due to the ever-increasing of system complexity, security threats and the hard drive size in today's PCs, conventional backup and recovery solution becomes a very slow and technical challenging task. Rollback Rx represents advancement in technology that is never before been available in fixing PC problems. The idea is that don't waste your time troubleshooting PC problems. System crashes, file corruptions, virus infections...could take hours to days to repair. Rollback Rx Professional eliminates the hassles and headaches of troubleshooting common PC problems by instantly returning your PC to the time before the onset of the problems.

What makes Rollback Rx Professional the best choice for your PC rollback solution?

- It does not require hidden partition or reserved disk space to install.
- It supports unlimited snapshots.

- It takes a new snapshot in 5 seconds.
- It takes a snapshot without restarting the computer.
- It rolls back to a snapshot in less than 10 seconds.
- It works even if Windows OS fails to startup.
- It allows file recovery from snapshots.
- It allows snapshot encryption to prevent data thief in the event of lost PC.
- It does not deteriorate PC system performance.
- It works as if it's not even there, it doesn't require you to do a thing.

What Can Rollback Rx Do?

Rollback Rx Professional allows you quickly and easily to:

- Recover deleted, corrupted files.
- Rollback the entire computer to a clean system after virus infections.
- Restore crashed system to working state.
- Reset publicly shared system to clean, pre-configured states after each session.
- Remove unwanted software installations.
- Back out failed software deployment process.
- Fix Windows system crashes or software problems.
- Try out software products before actual deployments.
- Complete removal of Trojan Horse or spy ware.
- Protect your system and data from data thieves.

Rollback Rx Benefits?

Why do I need Rollback Rx Professional?

You need Rollback Rx Professional, if you want to:

- Reduces computer maintenance by up to 90%.
- Reduces organization feuds when writing restriction policies.
- Reduces Total Cost of Ownership of an organization's assets by minimizing hard drive maintenance, administration time, and troubleshooting.
- Reduces unnecessary anxiety related to allowing users access.
- Eliminates re-imaging of computers.
- Eliminates common negative consequences of user experimentation.
- Eliminates downtime or "out of order" signs at user computers.
- Simplifies the maintenance process and environment.
- Instantly refreshes computers to their optimal working state.
- Significantly lowers Total Cost of Ownership of Technology Assets.
- Ensures consistent configurations.
- Prevent identify thief and key board logging.

Program Components

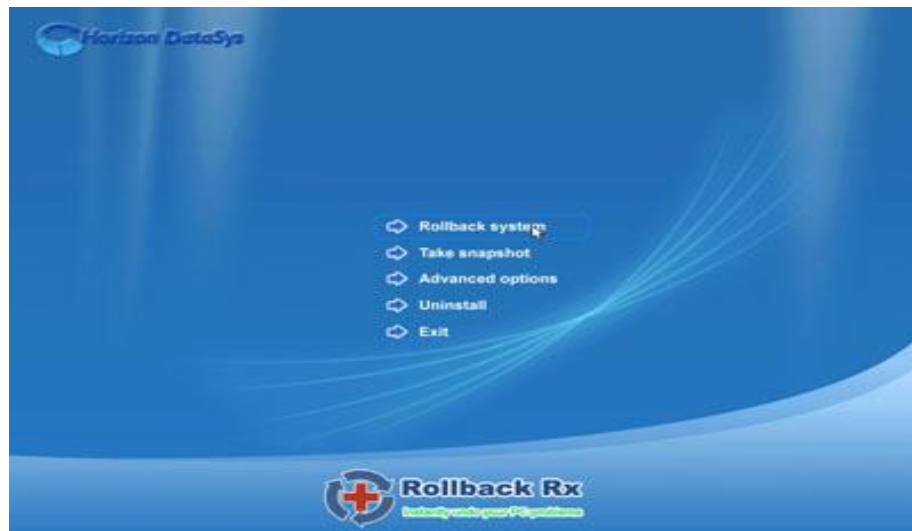
Familiar yourself with Rollback Rx Professional program components before continue to explore Rollback Rx.

Subsystem Console Interface to Rollback Rx Professional disk operating system (DOS), which is a mini-operating system works under Windows operating system to provide you rollback capability when Windows is not longer accessible. You can access the Subsystem Console by press the HOME key on the keyboard during the system startup. In Subsystem Console, you can rollback system, take new snapshot, or uninstall Rollback Rx in emergency situations.

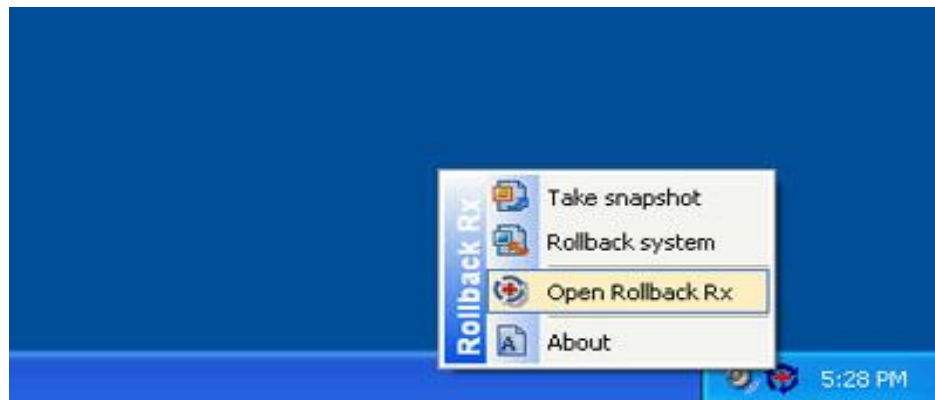
Chapter 1



INTRODUCTION



System Tray Icon It is the Rollback Rx Professional shortcut on your desktop. You can find it in the lower right hand corner of your Windows desktop. It provides you quick access to restore system, take new snapshot functions. You can also launch the Rollback Rx main program console, Application Console, from the system tray icon popup menu. Access the system tray icon by right click on the icon to bring up the popup menu.



Instantly undo your PC problems

Chapter 1



Application Console Application Console is Rollback Rx Professional's main program console. There you have access to all the program features.



Instantly undo your PC problems

System Requirements

Rollback Rx Professional system requirements:

- Intel® Pentium® III or equivalent processor
- Windows XP Professional, Home Edition, or Microsoft® Windows® 2000; or Windows Vista™*
- 64MB of RAM
- 1GB of available hard-disk space
- CD/DVD ROM if you need to setup from a CD
- Internet connection if you want to activate the program over Internet connection



Rollback Rx Professional is designed for Windows PCs. Do NOT install it on servers!

Default Setup

Default Setup will install Rollback Rx Professional with some default program settings such as:

- Copy program files to C:\program files\shield folder
- Protect all available partitions on the 1st hard drive
- Disable Rollback Rx access control (Do not require a password to access Rollback Rx program consoles)
- Disable Windows System Restore

You only need to provide your Product ID for the Default Setup process.

Custom Setup

Custom Setup lets you to configure program settings during setup such as:

- Where to copy program files to
- What partitions to protect
- Enable/Disable Rollback Rx access control
- Enable/Disable Windows System Restore
- Setup Rollback Rx on multi-boot systems

Advanced Setup

Advanced Setup will read in the program settings from a setup configuration file, **setup.cfg**.

You create the **setup.cfg** configuration file using **Advanced Setup Configuration Wizard** (ASCW) provided in the support folder on the program CD. Through the **Setup.cfg**, you can configure all the Rollback Rx Professional program settings. Advanced setup is mainly used for mass deployment.

Unattended Deployment

To mass deploy Rollback Rx with Windows active directory, SMS software deployment tools, Network logon scripts, or Ghost images, refer to the Rollback Rx Deployment Whitepaper included in the Documents folder on the program CD.

Product Activation

Rollback Rx contains software-based product activation technology, which means you need to activate your copy of Rollback Rx in order to use it permanently.

ACTIVATE Rollback Rx OVER INTERNET CONNECTION

If the computer has Rollback Rx installed is connected to Internet, you might easily activate Rollback Rx over the Internet connection.

1. Upon the purchase of Rollback Rx, you will receive an authorized Product ID from Horizon DataSys. You might install Rollback Rx with the authorized Product ID and then activate it, or if you already have a demo version of Rollback Rx installed, you might activate the demo install with the authorized Product ID without uninstall and reinstall the program.

2. To activate Rollback Rx over Internet connection, Right click the Rollback Rx system tray icon and select ABOUT from the popup menu. Click on the Activate button on the ABOUT Window. Select "Activate Rollback Rx over Internet connection", click on Next.

2.A If you had installed Rollback Rx with an authorized Product ID that you had received from Horizon DataSys, simply click on Activate button.

2.B If you had installed a demo version of Rollback Rx, you need to copy and paste the authorized Product ID that you received from Horizon DataSys into the dialog box, and then click on Activate button.

The computer will need to restart to complete the activation process. That is it! You won't need to input any other information.

* You can only activate the number of computers authorized by the authorized Product ID.

ACTIVATE Rollback Rx WITHOUT INTERNET CONNECTION

If the computer has Rollback Rx installed does not have an Internet connection, you need to manually activate Rollback Rx.

1. To manually register Rollback Rx, Right click the Rollback Rx system tray icon and select ABOUT from the popup menu. Click on the Activate button on the ABOUT Window, select "Activate Rollback Rx without Internet connection", click on Next.

2. On the Product Activation Window, you will see a Product ID and a Registration ID, write down those two IDs and send them to Horizon DataSys Tech support by fax or phone.

3. Horizon DataSys Tech Support will reply you a Registration Code based on the Product ID and Registration ID you provided.

* If you have another computer that has Internet connection, you might visit this page to generate a Registration Code by providing the Product ID and Registration ID:

<http://horizondatasys.helpdeskconnect.com/?cmd=addticket>

Chapter 2



SETUP

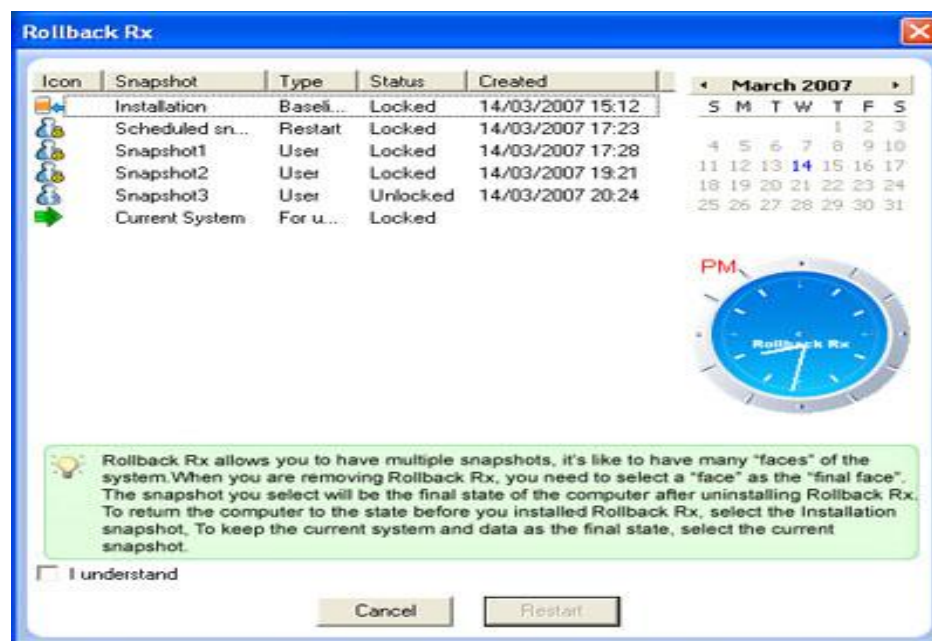
4. You need to copy and paste the Registration Code into the Registration Code dialog box on the Register windows and then on Activate button.

The computer will need to restart to complete the registration process. That is it! You won't need to input any other information.

Uninstall From Windows

You might remove Rollback Rx Professional from your computer through one of the two options provided in Windows:

- Uninstall Rollback Rx from Control Panel, Add/Remove Programs
 - Uninstall Rollback Rx by running Start/All Programs/Rollback Rx/Uninstall
1. Uninstaller will prompt you to select a snapshot to uninstall the system to. You might choose to keep the current system and data or return the computer to another snapshot during uninstall. The snapshot selected here will be the final state of the PC.



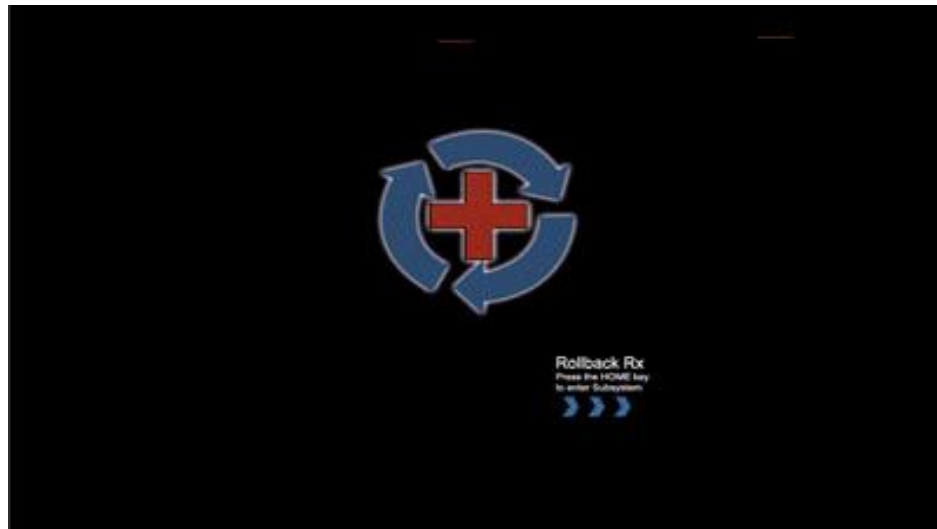


If you have problem with your computer, DO NOT attempt to uninstall Rollback Rx first. Rollback the system to a good snapshot might fix the problem. If you have problem to access either Rollback Rx Application Console or Subsystem Console to perform a rollback, contact Horizon DataSys technical support before attempting to uninstall Rollback Rx.

Uninstall When Windows Fails to Boot

If you cannot boot into Windows and you need to uninstall Rollback Rx Professional, you can uninstall it from the Subsystem Console.

1. Restart the computer, press the HOME key as you see the Rollback Rx screen to enter the Subsystem Console. You will need to provide a user name and password if Rollback Rx access control is enabled.



2. Select Uninstall from the Subsystem Console menu.

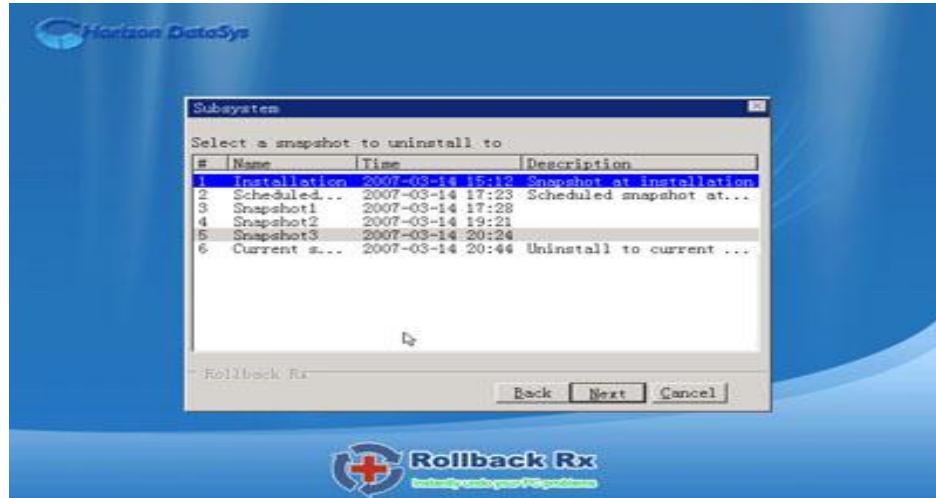
Chapter 3



UNINSTALL



3. Uninstall will prompt you to select a snapshot to uninstall to. The snapshot you selected will be the final state of the PC. Click on Next to continue.



Instantly undo your PC problems

Different Ways To Rollback System

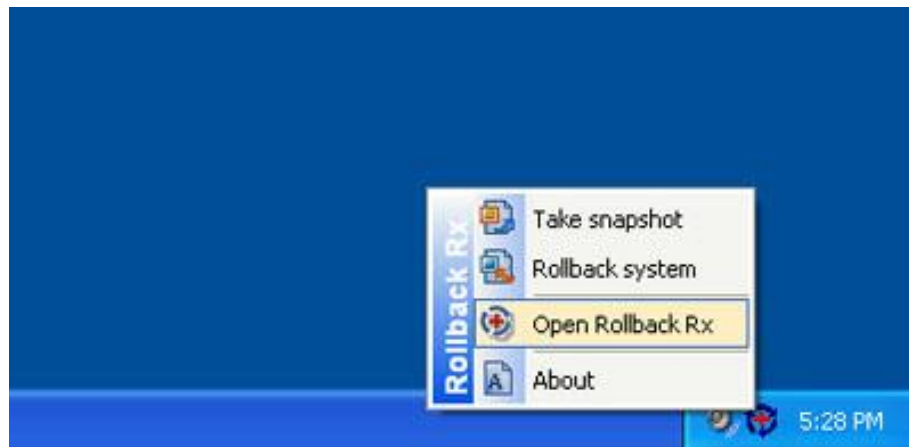
You can rollback system with one of the following methods:

- Rollback system from Rollback Rx main program console in Windows
- Rollback system from Rollback Rx subsystem console when Windows O.S. fails to start up
- Rollback system from desktop shortcut in system tray
- Rollback system with command line switches or batch files
- Setup scheduled tasks to automatically rollback system

Rollback System from Main Program Console

To rollback system from the main program console:

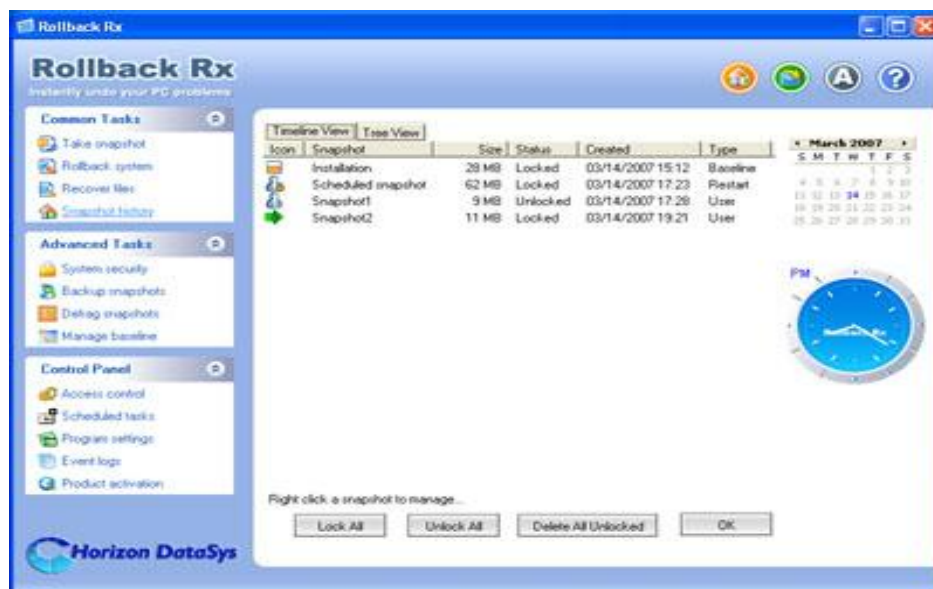
1. Right click the Rollback Rx icon in the system tray. Select "Open Rollback Rx" from the popup menu. You will need a password to access the main program console if the Rollback Rx access control is enabled.



Chapter 4

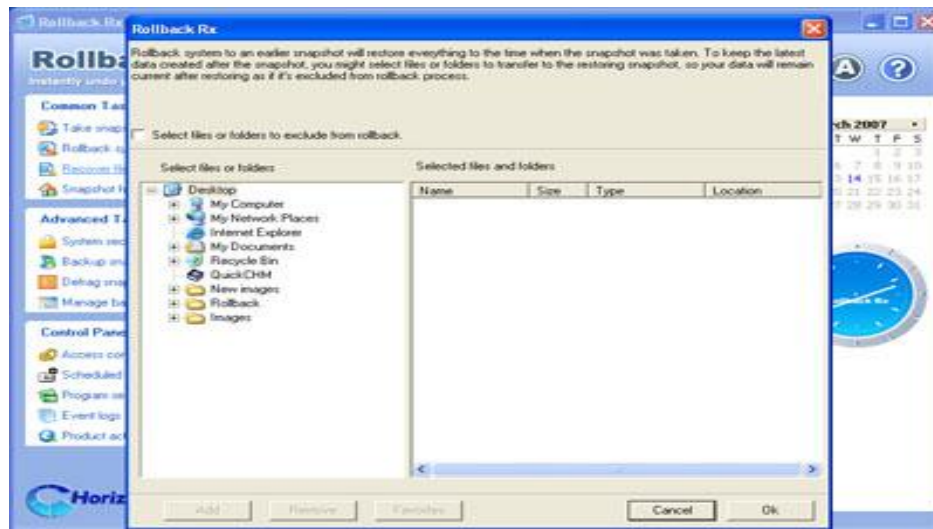


2. In the main program console, under the Common Tasks, click on "Rollback system", the right-hand panel will display all the available snapshots for your computer. The current snapshot you are in is indicated by a big green arrow. Select the snapshot you would like to rollback system to. You can also choose to take a snapshot of the current system before rollback by checking the "Take a snapshot of the current PC before rollback in case I want to come back" checkbox. Click on "Next" to continue.

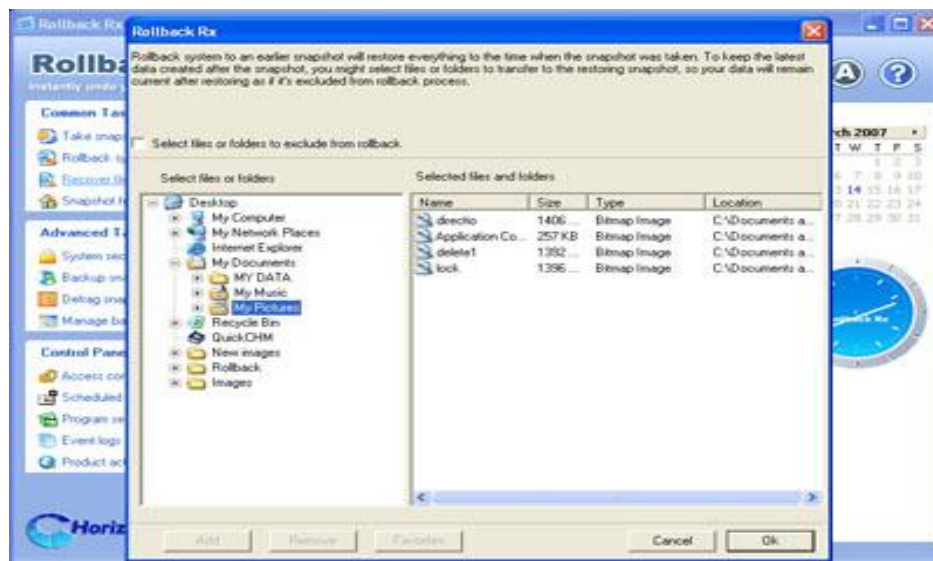


Rollback system to a snapshot will reset everything on the hard drive to the time of the snapshot. To keep the latest user data created after the snapshot, you might select files or folders to transfer to the restoring snapshot, so your data will remain current after rollback as if it's excluded from rollback. To exclude files from the rollback, click on the Exclusion button.

Chapter 4



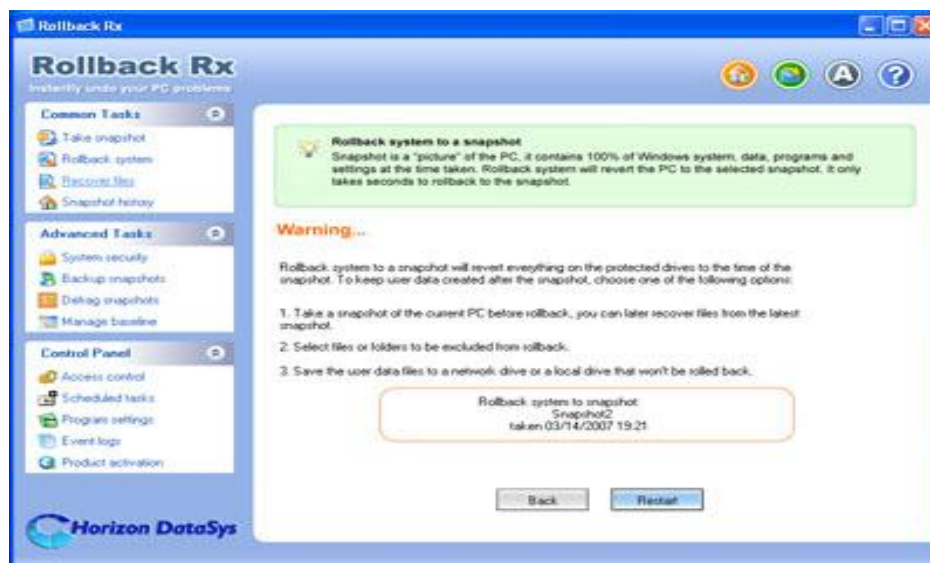
3. Select the files or folders in the current system, that you would like to synchronize with the snapshot you are rolling back to. It is recommended you only select files, because large folders could take longer time to synchronize.



Chapter 4



4. The computer needs to restart to rollback the system. Click on "Restart" to restart the computer.



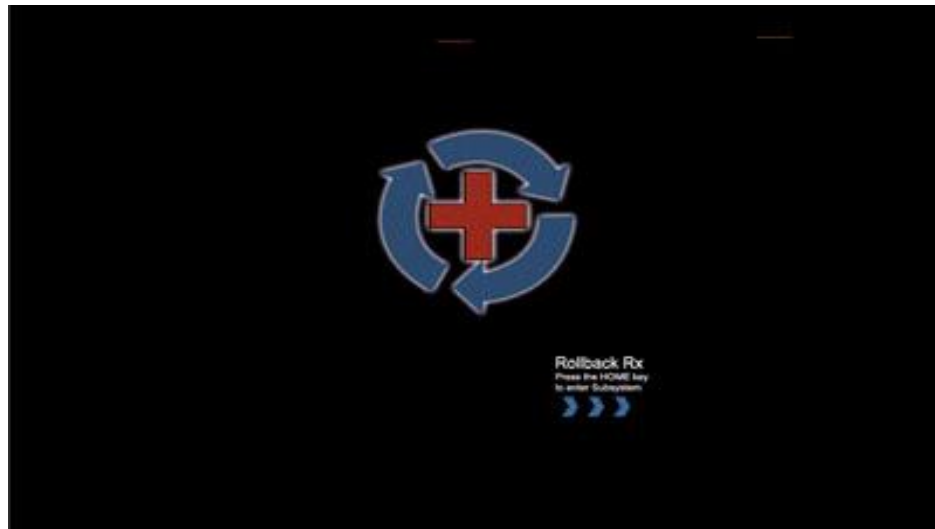
You might select to take a snapshot of the current PC before rollback to a snapshot in case you want to come back later

Rollback System When Windows Fails To Start Up

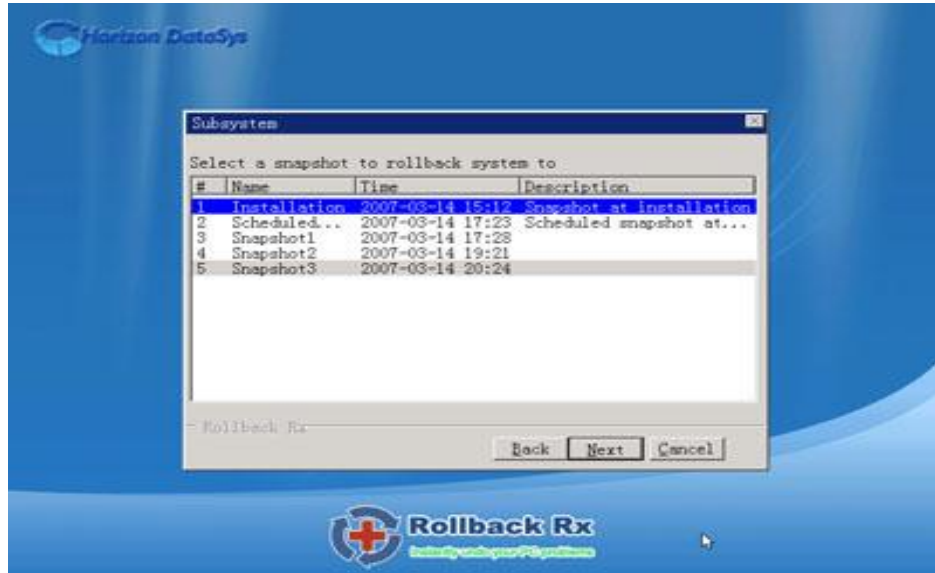
If you encounter a complete system crash, you are not able to start Windows O.S., you need to rollback the system from the Rollback Rx Subsystem Console.

1. To access the Subsystem Console, restart the computer, press the HOME key as you see the Rollback Rx logo. You will need to provide a user name and password if the Rollback Rx access control is enabled.

Chapter 4



2. Click on "Rollback system". You will see a list of available snapshots. Select a snapshot and click on "Next" to rollback to the snapshot.



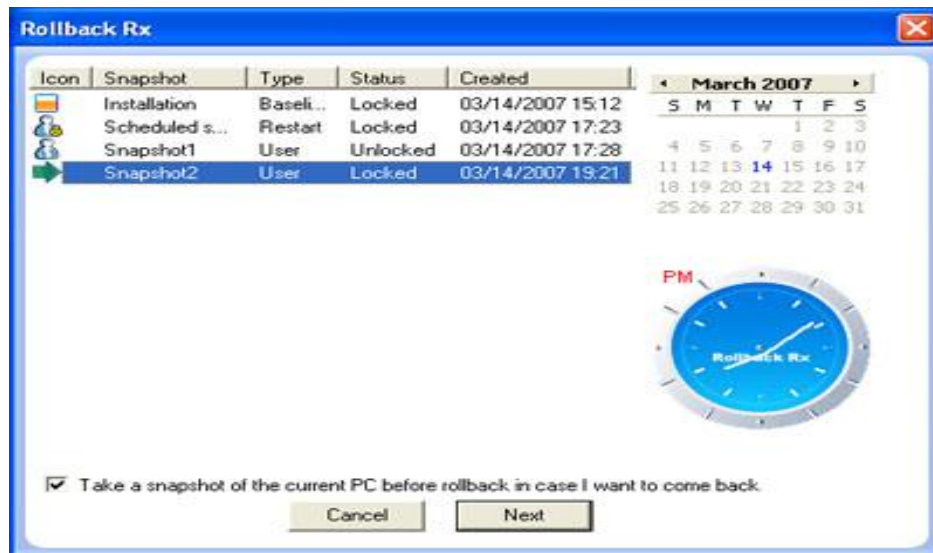
Rollback System from Desktop Shortcut

To rollback system from the desktop shortcut:

1. Right click the Rollback Rx icon in the system tray, select "Rollback system" from the popup menu. Select a snapshot to rollback the system to. You can also choose to take a snapshot of the current PC by checking the "Take a snapshot of the current PC before rollback in case I want to come back" checkbox. Click on "Next" to continue.



2. The computer needs to restart to rollback to the snapshot. Click on "Restart" to restart the computer.



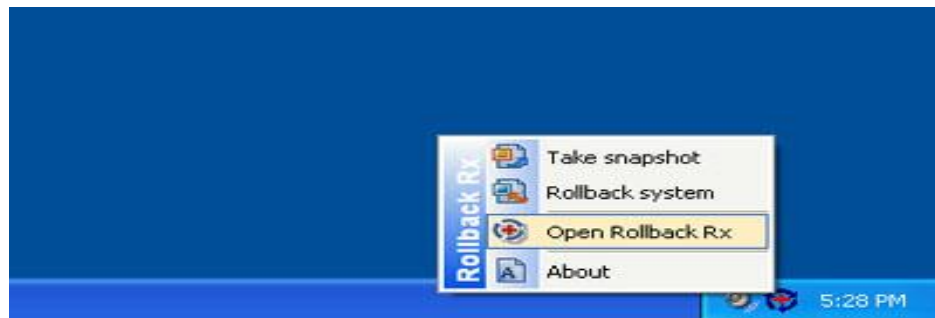
Rollback System with Scheduled Tasks

You can schedule Rollback Rx to automatically rollback system with one of the 7 schedule settings.

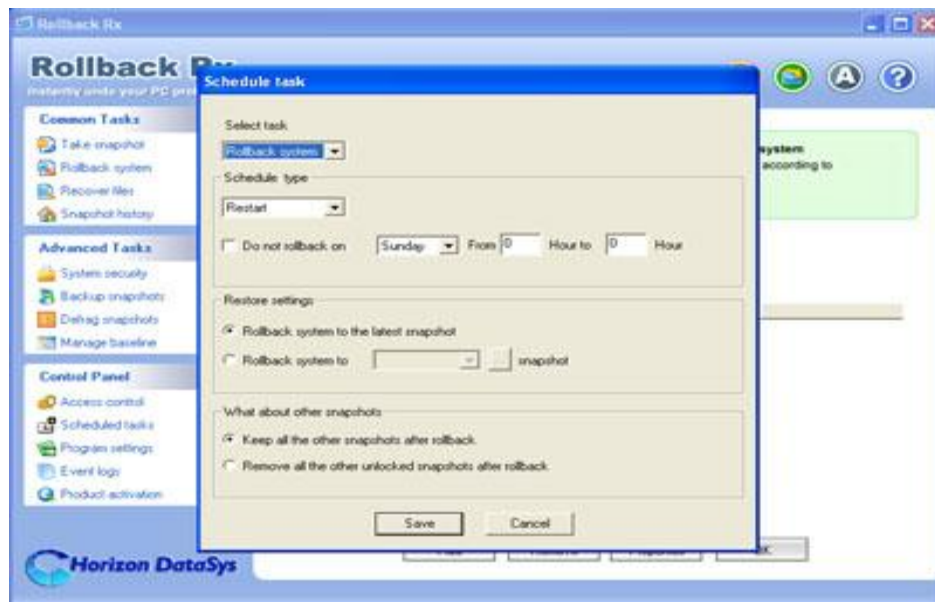
- Schedule Rollback Rx to rollback system on restart
- Schedule Rollback Rx for system restore on log off
- Schedule Rollback Rx for a one-time system rollback
- Schedule Rollback Rx for hourly system rollback
- Schedule Rollback Rx for daily system rollback
- Schedule Rollback Rx for weekly system rollback
- Schedule Rollback Rx for monthly system rollback

1. Right click the Rollback Rx icon in the system tray. Select "Open Rollback Rx" from the popup menu. You will need a user name and password to log into Application Console if the Rollback Rx access control is enabled.

Chapter 4



2. In the Application Console, under the Control Panel Task menu, click on the "Scheduled tasks" and "Add" to bring up the new schedule settings window, Select "Rollback system" in the schedule task drop-down list; Select "your restore schedule type" in the schedule type drop-down list.

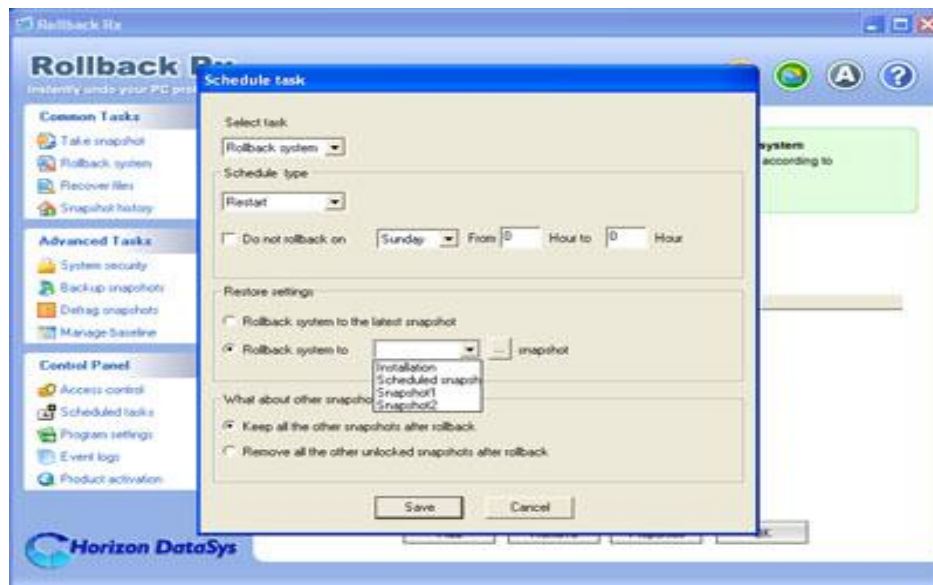


3. For the restore settings, you can select which snapshot you want to rollback the system to. You can select to a). rollback system to the latest snapshot, b). restore system to a specific

Chapter 4

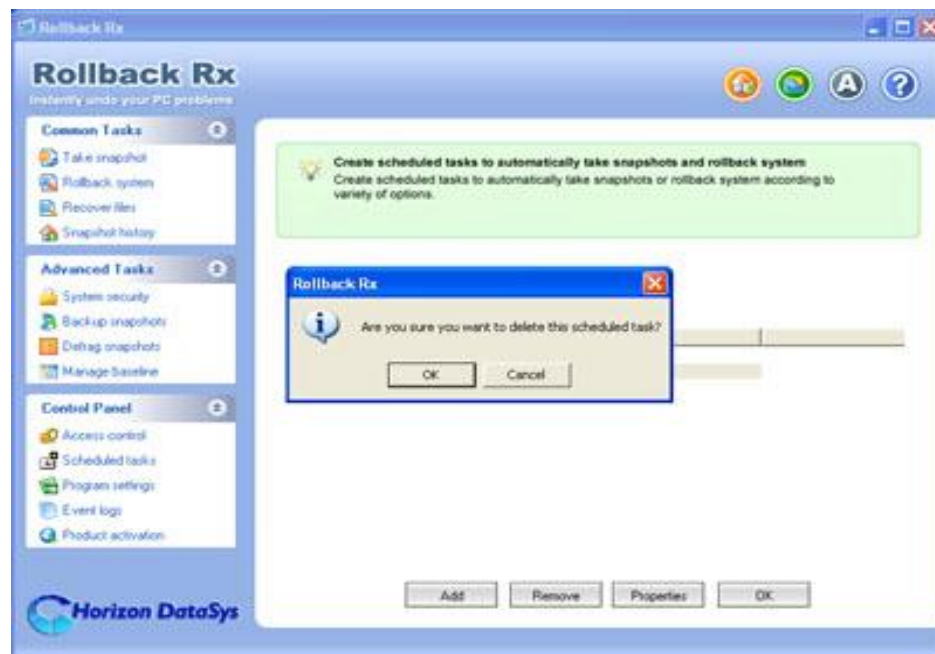


snapshot. You can also choose what to do with other snapshots after rollback the system. a). keep all the other snapshots. b). remove all the other unlocked snapshots. Click on "Save" to save the new schedule setting.



4. You will then see a new scheduled task entry. You can select to view the properties of the scheduled task or delete it.

Chapter 4

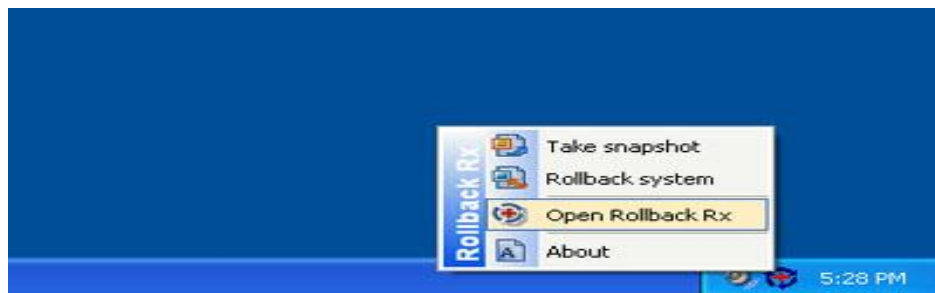


Rollback System with Batch Commands

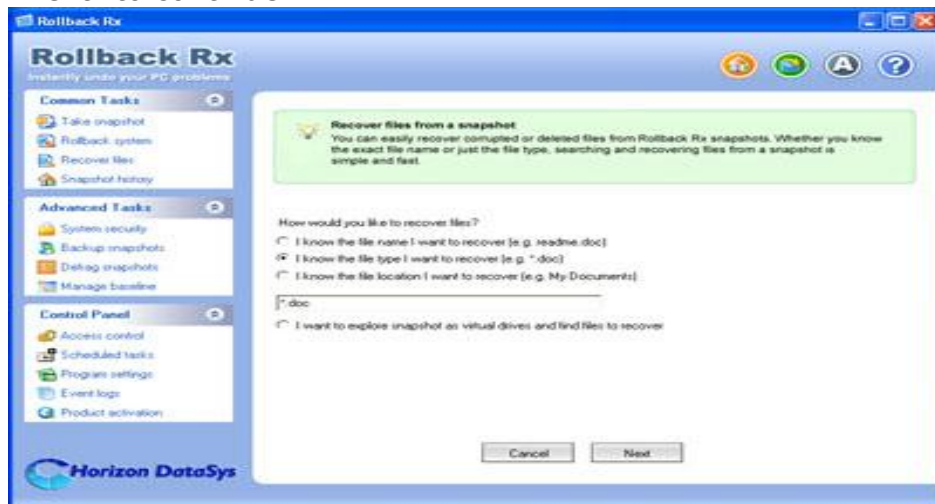
You might incorporate Rollback Rx instant recovery ability into your application by calling a command line switch, refer to the Command Line Switches section of this Help for details on rollback system with batch commands.

Search Snapshots To Recover Files

1. To recover a file or folder, right click the Rollback Rx icon in the system tray. Select "Open Rollback Rx" from the popup menu. You will need a user name and password to access the Application Console if the Rollback Rx access control is enabled.



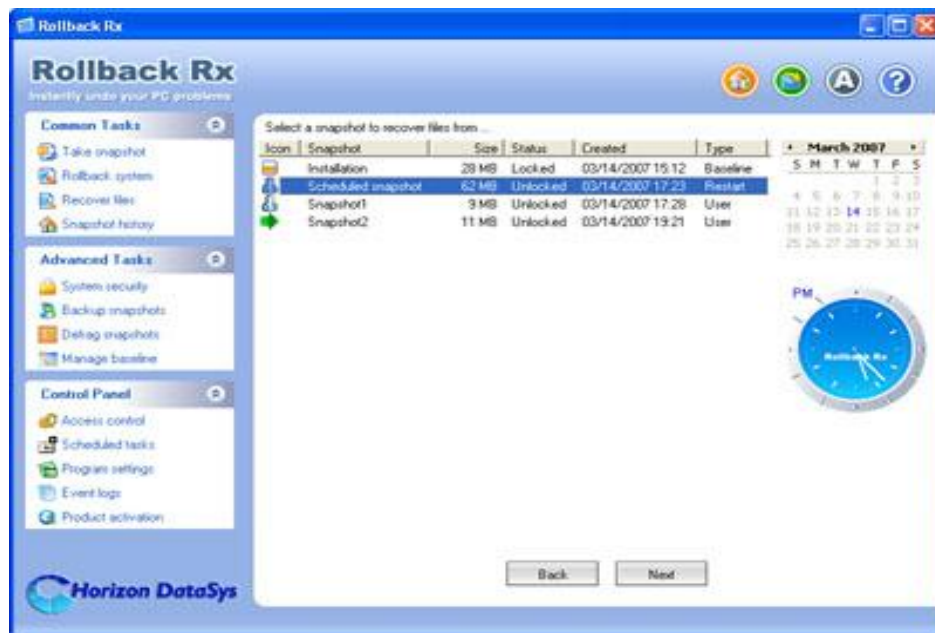
2. In the Application Console, under the Common Task menu, click on "Recover files". Choose one of the three search options provided and then input the search string. Click on "Next" to continue.



Chapter 5



3. From the snapshot list, select the snapshot you would like to recover the files from. If you are not sure which snapshot to recover the files from, use the calendar and clock to approximate your time. Click on "Next" to continue.

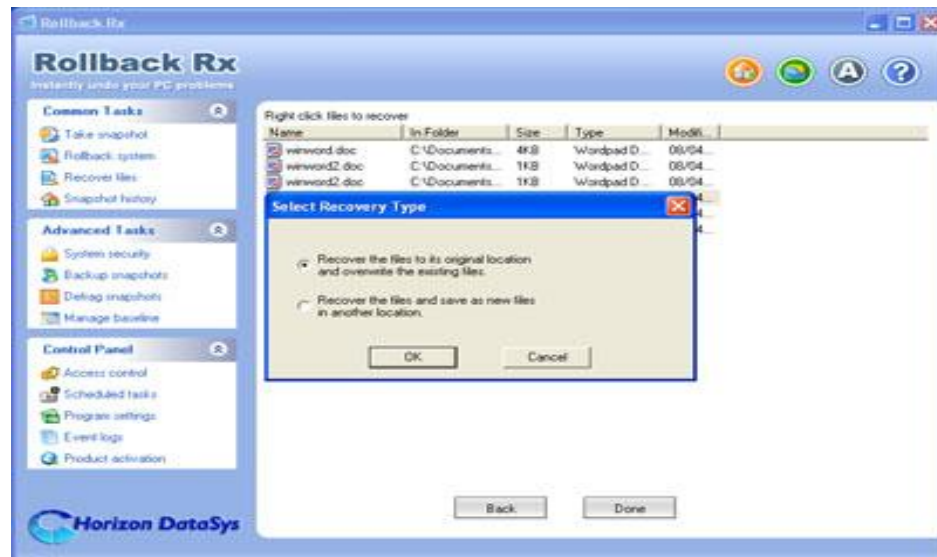


4. On the search results window, select and right click the files or folders you would like to recover. You can choose to recover the files to a new location or to its original location. **If you choose to recover to the original location, the existing files with the same name will be overwritten.**

Chapter 5

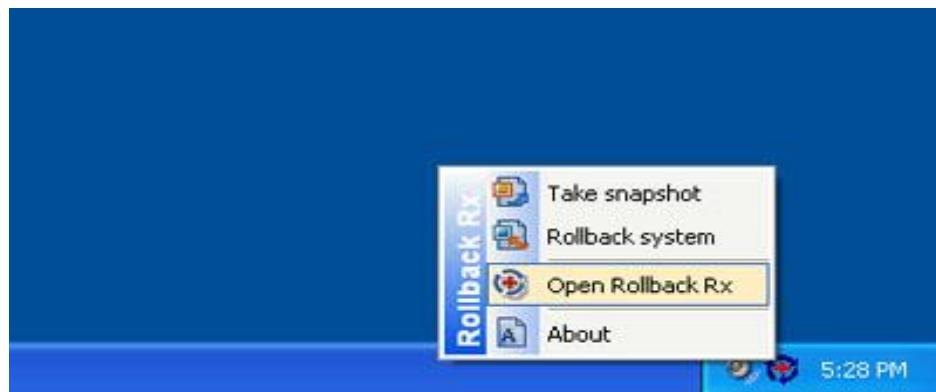


RECOVER FILES



Explore Snapshots To Recover Files

1. To explore snapshots to recover files, right click the Rollback Rx icon in the system tray. Select "Open Rollback Rx" from the popup menu. You will need a user name and password to access the Application Console if the Rollback Rx access control is enabled.



Instantly undo your PC problems

Chapter 5

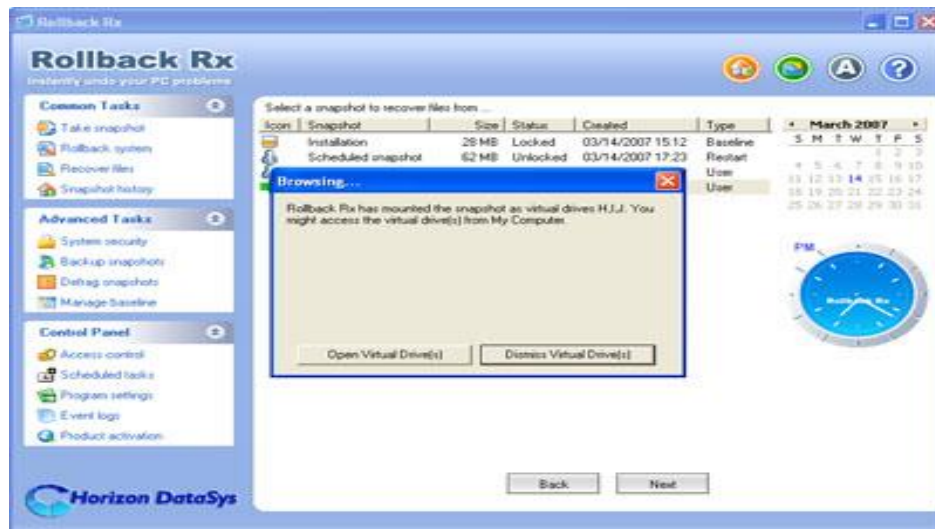


2. In the Application Console, under the Common Task menu, click on "Recover files". Choose "I want to explore snapshots to find files to recover" option, click on "Next" to continue.

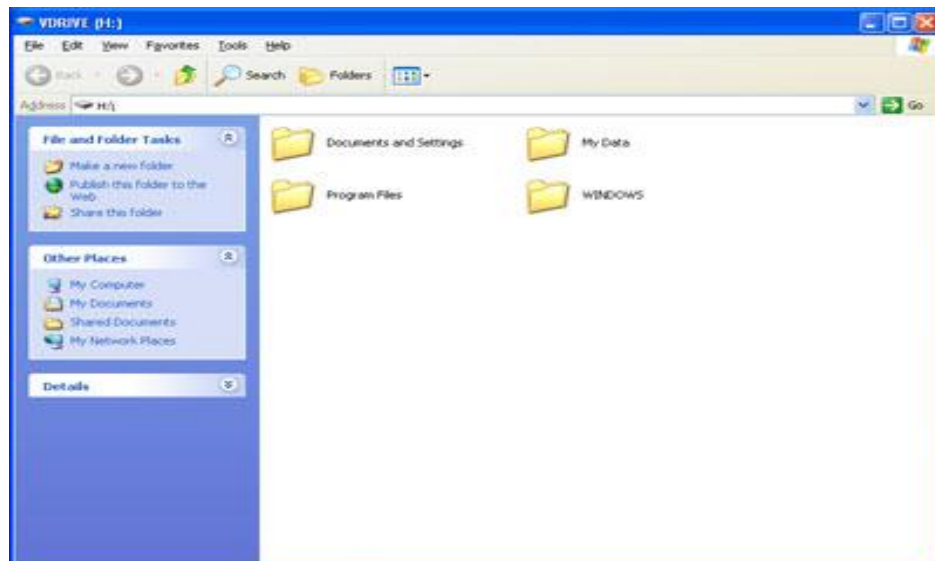


3. From the snapshot list, select the snapshot you would like to recover the files from. If you are not sure which snapshot to recover the files from, use the calendar and clock to approximate your time. Click on "Next" to continue.

Chapter 5



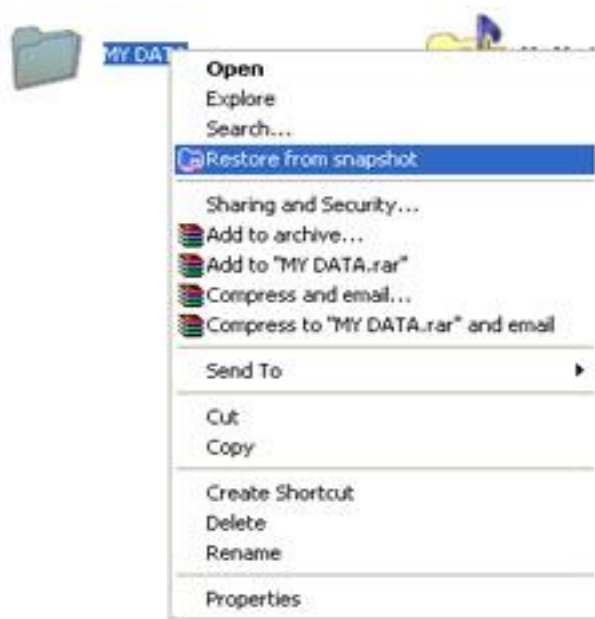
4. Rollback Rx will create virtual drive(s) for the selected snapshot. You can see the virtual drive(s) in My Computer and browse them as regular drives to find files. To recover a file or folder, copy it to your other drives in My Computer.



Revert Files To Old Time Stamp

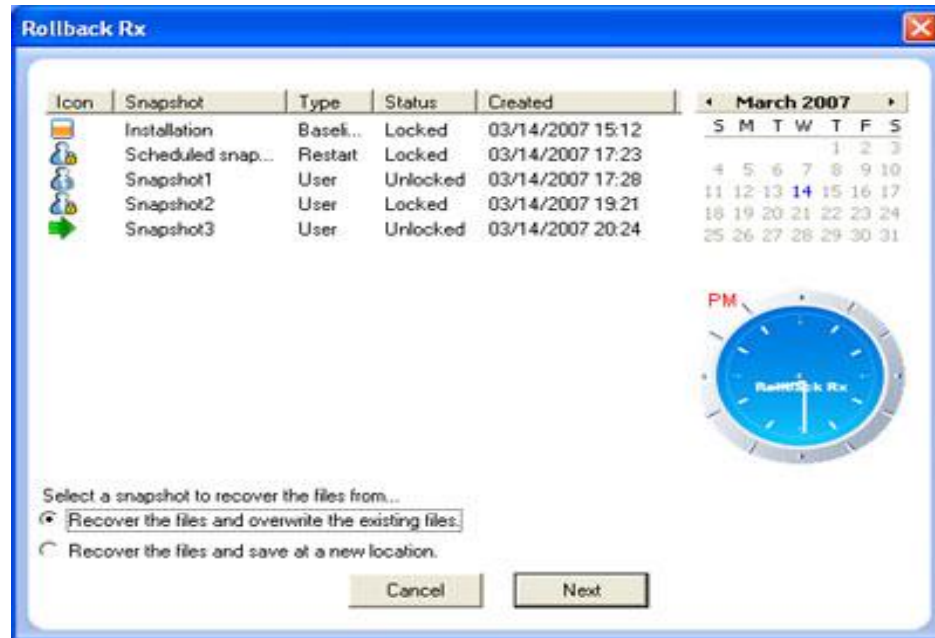
If you have made unwanted changes to a file, or you just want to look at an earlier version of a document. You can use Rollback Rx to revert a file to its earlier versions.

1. Right click the file you want to revert. Select "Restore from snapshot" on the popup menu. You will need a user name and password to revert the file if the Rollback Rx access control is enabled.



2. From the snapshot list, select a snapshot or time stamp by using the calendar and clock, that you would like to revert the file to. What makes Rollback Rx Professional the best choice for your PC rollback solution?

Chapter 5



3. You can choose to save the file to a new location or to overwrite the existing file. Click on "Next" to continue.

Different Ways To Take New Snapshots

The magic of Rollback Rx Professional is within the snapshots. You fix a crashed system by rollback the system to the good snapshot, you recover a corrupted file from a snapshot archive. A snapshot can be viewed as the picture of the system at a specific time. It is very important to take new snapshots to include new changes on your system. So in the case of system rollback, you won't be rolled back to weeks or months ago. You can take a new snapshot in seconds with Rollback Rx Professional.

You might take a new snapshot with one of the following methods:

- Take new snapshots from Rollback Rx main program console in Windows
- Take new snapshot from Rollback Rx Subsystem console when Windows O.S. fails to start up
- Take new snapshots from desktop shortcut in system tray
- Take new snapshots with command line switches or batch files
- Setup scheduled tasks to automatically take new snapshots

Take New Snapshot From Main Program Console

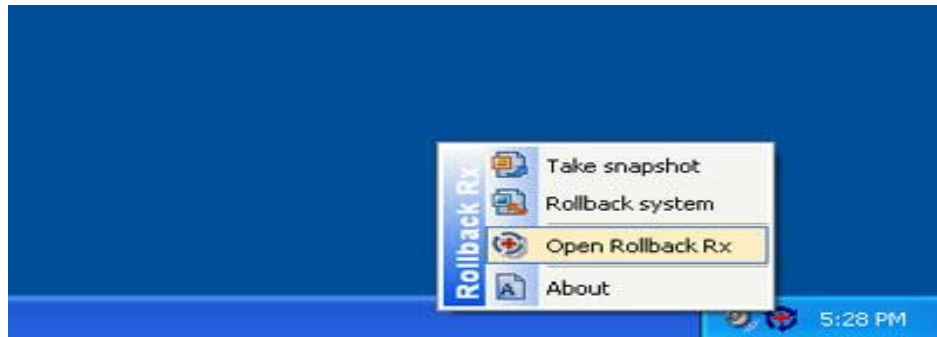
To take new snapshots from the main program console, Application Console:

1. Right click the Rollback Rx icon in the system tray. Select "Open Rollback Rx" from the popup menu. You will need a password to access the Application Console if the Rollback Rx access control is enabled.

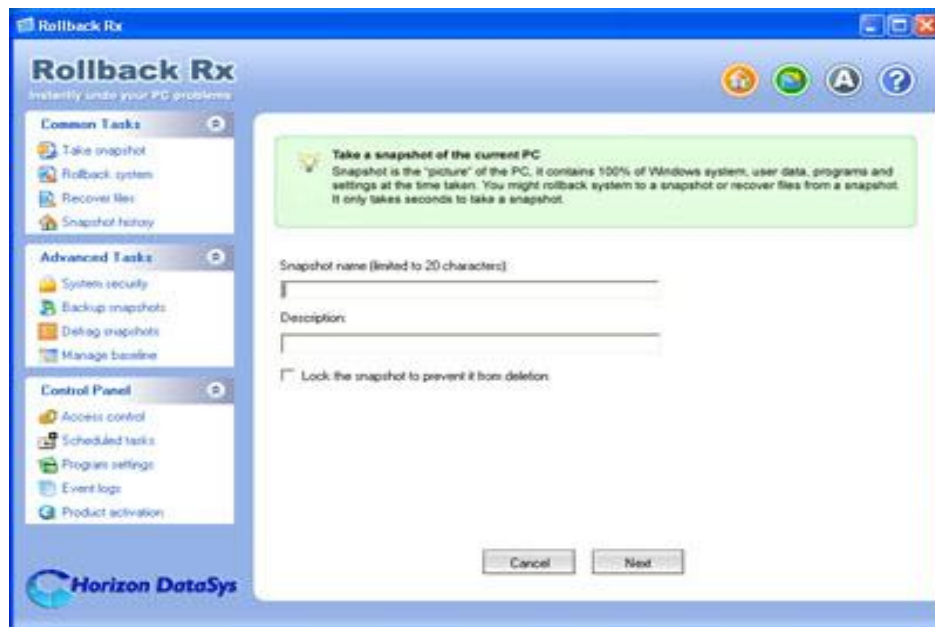
Chapter 6



TAKE SNAPSHOTS



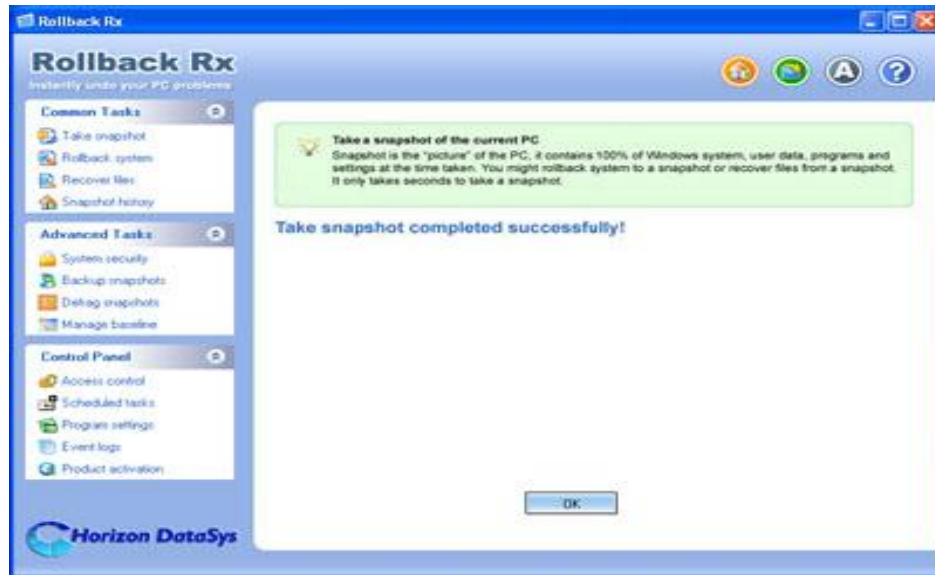
2. In the Application Console, under the Commons Tasks menu, click on the "Take snapshot" link. You need to enter a name and description for the new snapshot. You can also choose to lock the new snapshot by checking the "lock the new snapshot" option. Locking the snapshot will prevent it from been deleted. Click on "Next" to continue. Snapshot name is limited to 20 characters. Snapshot description is limited to 50 characters.



Chapter 6



3. New snapshot will be created instantly.



To ensure the new snapshot's integrity, it is recommended you save all the files and close all running applications before taking a new snapshot.

Take New Snapshots When Windows Fails to Start Up

If you encounter a complete system crash, and you are not even able to start Windows operating system. Before you choose to rollback system to another snapshot from Rollback Rx Subsystem Console, you might take a new snapshot from the Subsystem Console to preserve your data up to the moment of crash. You can later access the crash snapshot for file recovery

Chapter 6



1. Restart the computer. Press the HOME key as you see the Rollback Rx Subsystem Console screen. You will need a user name and password if the Rollback Rx access control is enabled.



2. Click on "Take snapshot" button. You will need to enter a name and description for the new snapshot. Click on "Next" to take the new snapshot instantly. Snapshot name is limited to 20 characters. Snapshot description is limited to 50 characters.



By taking a snapshot of the crashed system, you preserve whatever it is available in that crashed system. After you rollback the system to an earlier snapshot, you can search the snapshot of the crashed system for possible data recovery.

Take New Snapshots From Desktop Shortcut

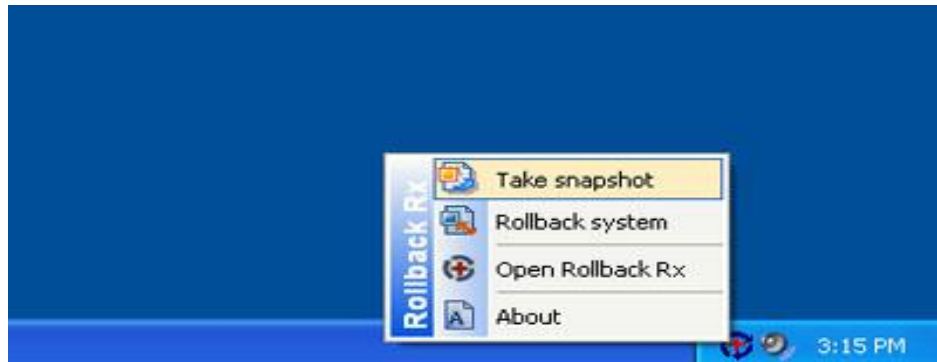
To take new snapshots from the desktop shortcut in system tray:

1. Right click the Rollback Rx icon in the system tray, select "Take snapshot" from the popup menu. You will need a user name and password if the Rollback Rx access control is enabled.

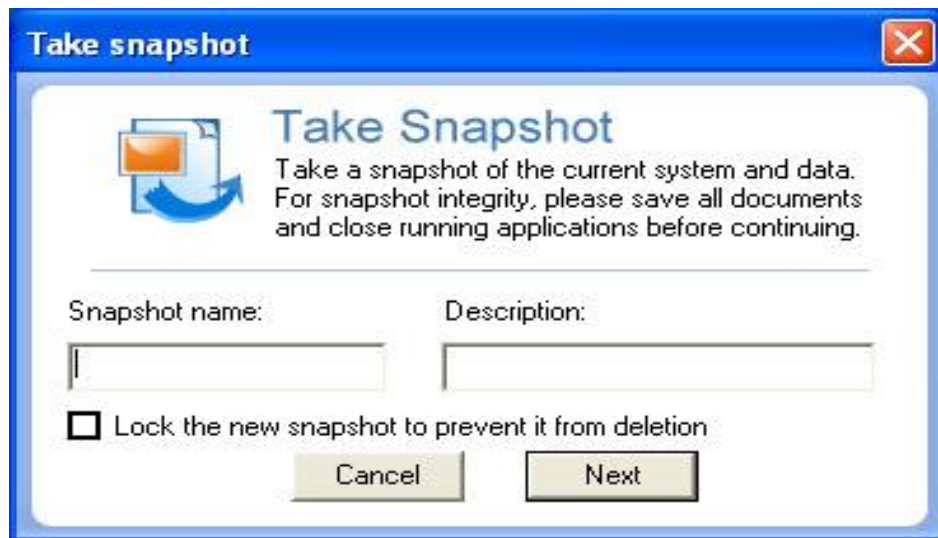
Chapter 6



TAKE SNAPSHOTS



2. Enter a name and description for the new snapshot. You can also choose to lock the new snapshot by checking the "Lock the new snapshot" option. Locking the snapshot will prevent it from being deleted. Click on "Next" to continue.



3. New snapshot will be created instantly.



To ensure the new snapshot's integrity, it is recommended you save all the files and close all running applications before taking a new snapshot.

Take Snapshots with Scheduled Tasks

You can schedule Rollback Rx to automatically take new snapshots with one of the 7 schedule settings.

- Schedule Rollback Rx to take new snapshots on restart
- Schedule Rollback Rx to take a one-time new snapshot
- Schedule Rollback Rx to take hourly new snapshots
- Schedule Rollback Rx to take daily new snapshots
- Schedule Rollback Rx to take weekly new snapshots
- Schedule Rollback Rx to take monthly new snapshots
- Schedule Rollback Rx to take event based snapshots

1. Right click the Rollback Rx icon in the system tray. Select "Open Rollback Rx" from the popup menu. You will need a

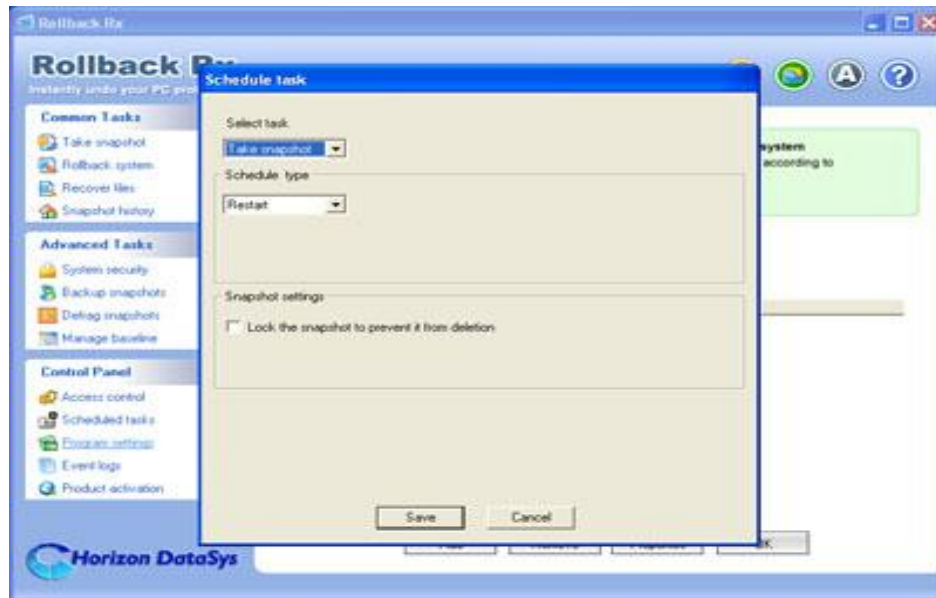
Chapter 6



user name and password to log in Application Console if the Rollback Rx access control is enabled.



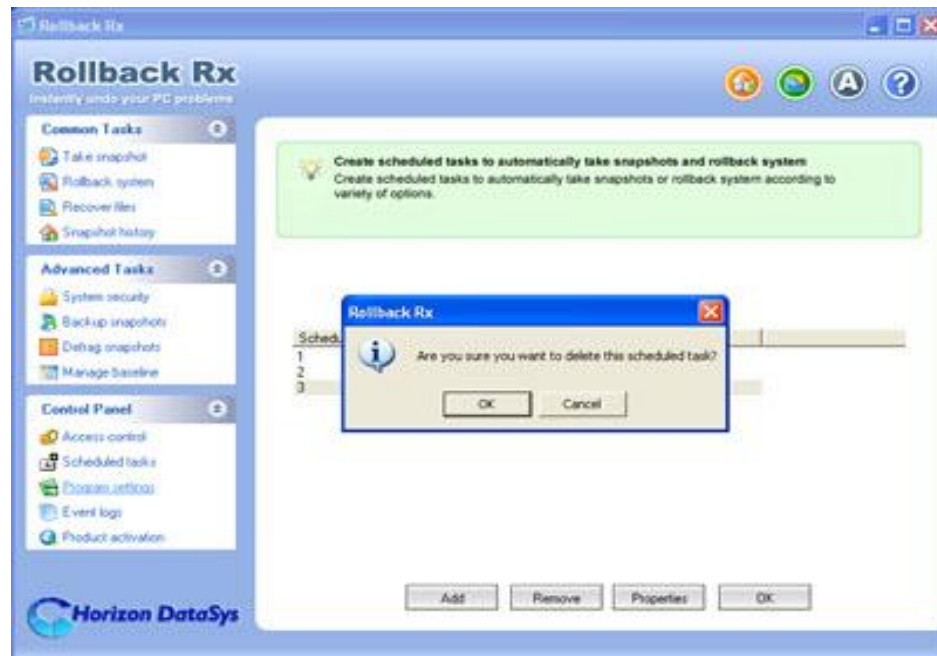
2. In the Application Console, under the Control Panel Task menu, click on the "Scheduled tasks" and "Add" to bring up the new schedule settings window, Select "Take snapshot" in the schedule task drop-down list; Select "your restore schedule type" in the schedule type drop-down list.



Chapter 6



3. You will then see a new scheduled task entry. You can select to view the properties of the scheduled task or delete it.



Take New Snapshot with Batch Commands

You might incorporate Rollback Rx instant recovery ability into your application by calling a command line switch, refer to the Command Line Switches section of this Help for details on take new snapshot with batch commands.

Manage Snapshots

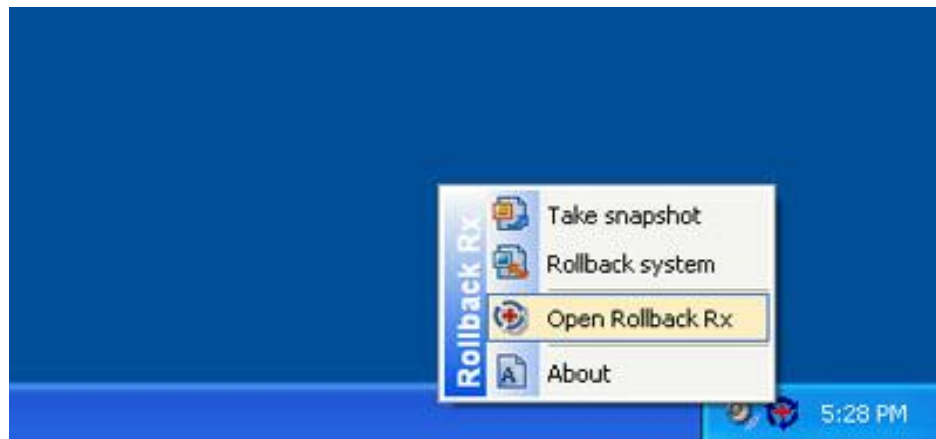
Rollback Rx allows you to manage the existing snapshots by:

- View snapshot properties
- Lock/unlock snapshots
- Delete snapshots
- Rename snapshots
- Defrag snapshots
- Explore snapshots
- Backup snapshots

View Snapshot Properties

To view the properties of a snapshot:

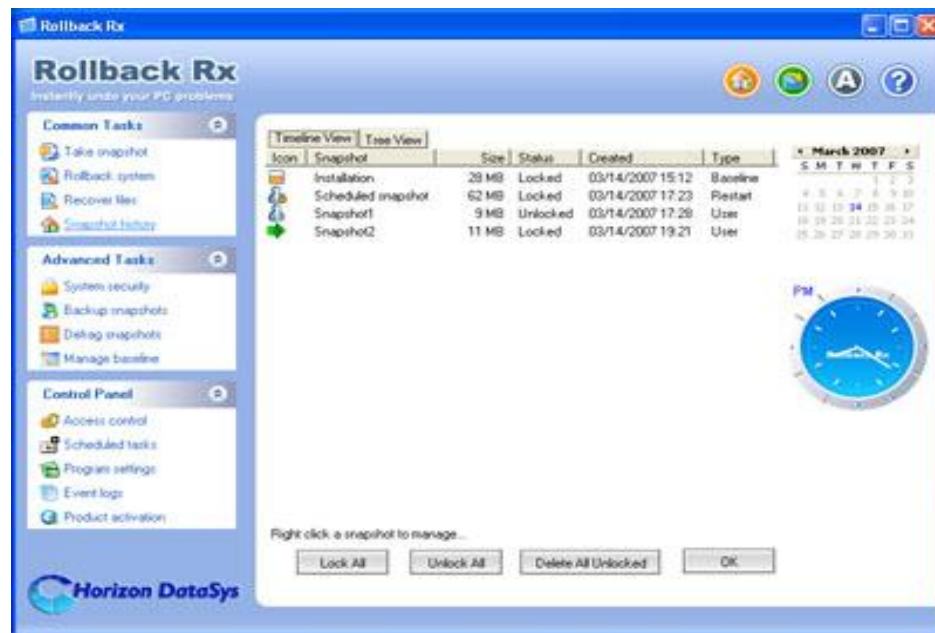
1. Right click the Rollback Rx icon in the system tray. Select "Open Rollback Rx" from the popup menu. You will need a user name and password to log in the Application Console if the Rollback Rx access control is enabled.



Chapter 7

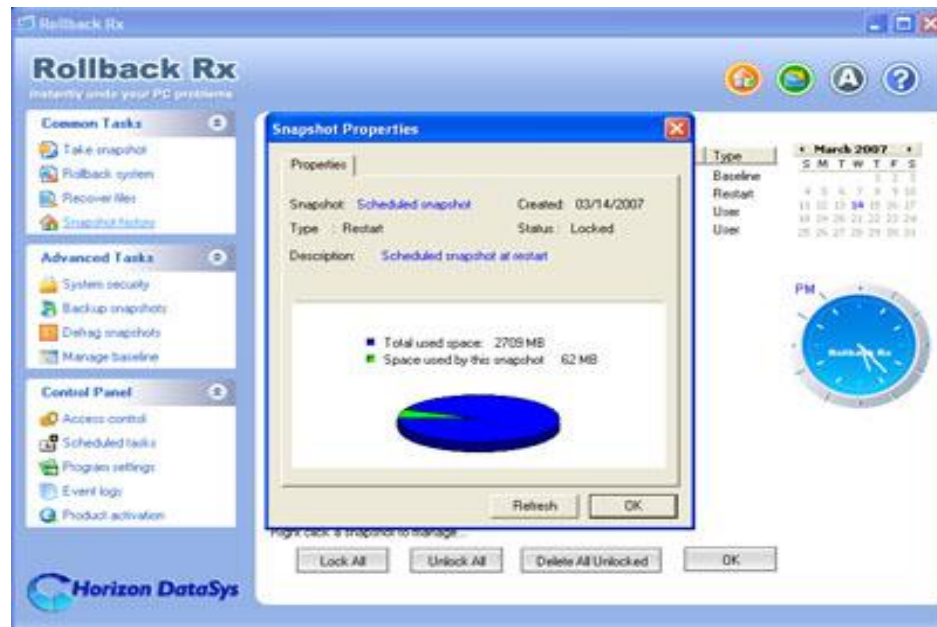


2. In the Application Console, under the Common Tasks menu, click on "Snapshot history". The right-hand panel will display all the available snapshots. The current snapshot you are in is indicated by a big green arrow.



3. Right click a snapshot to bring up the popup menu and select "Properties". You can change the snapshot name and description on its properties page. The used space information reveals how much drive space is taken by all snapshots and how much is taken by this snapshot.

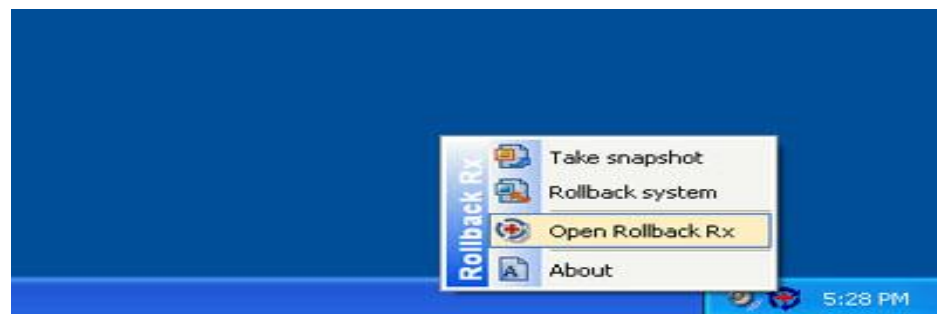
Chapter 7



Delete Snapshots

To delete Rollback Rx snapshots:

1. Right click the Rollback Rx icon in the system tray. Select "Open Rollback Rx" from the popup menu. You will need a user name and password to log in the Application Console if the Rollback Rx access control is enabled.

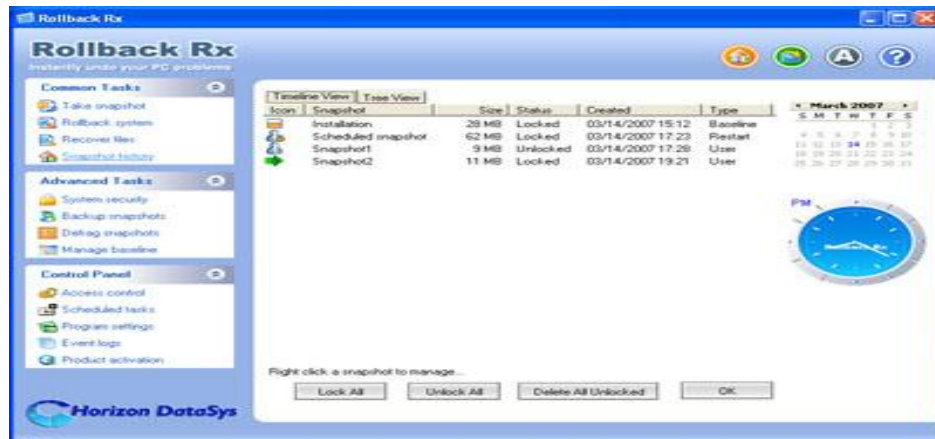


Instantly undo your PC problems

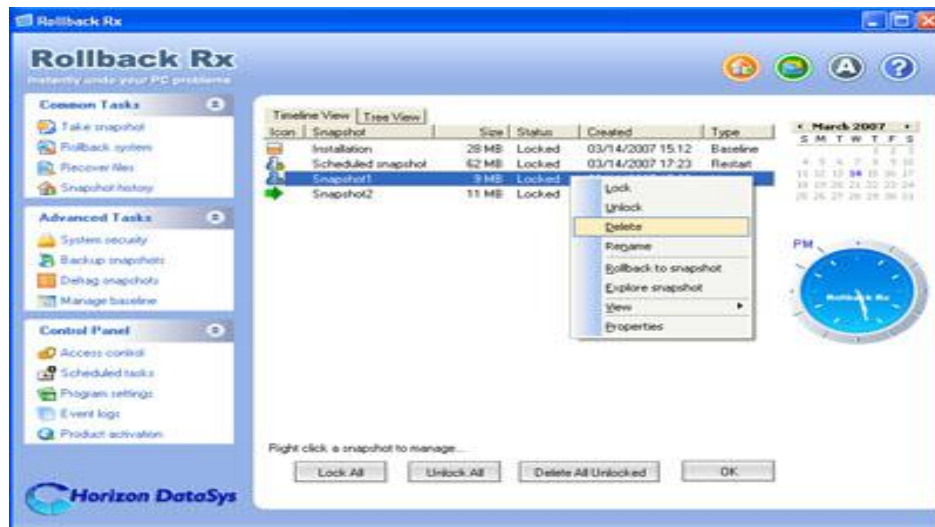
Chapter 7



2. In the Application Console, under the Common Tasks menu, click on "Snapshot history". The right-hand panel will display all the available snapshots. The current snapshot you are in is indicated by a big green arrow.



3. Right click a snapshot to bring up the popup menu and select "Delete". To delete multiple snapshots at a time, hold down Ctrl key while you select snapshots.



Chapter 7



4. You might also use the Delete All Unlocked button to delete all the unlocked snapshots.



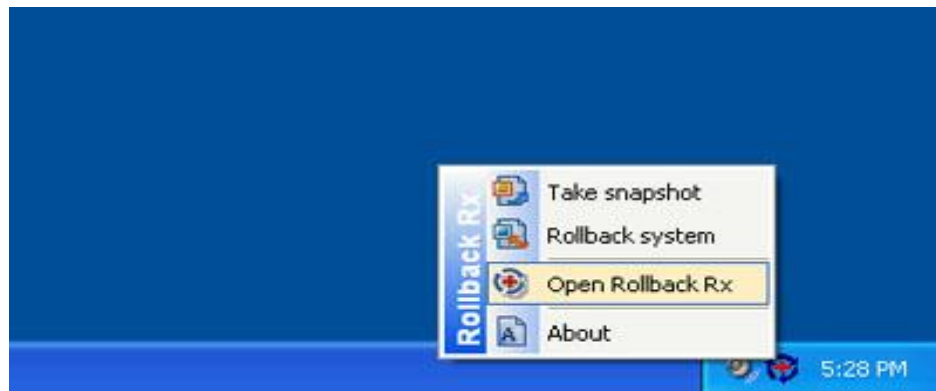
You can only delete unlocked snapshots. To delete locked snapshots, unlock it first

Lock or Unlock Snapshots

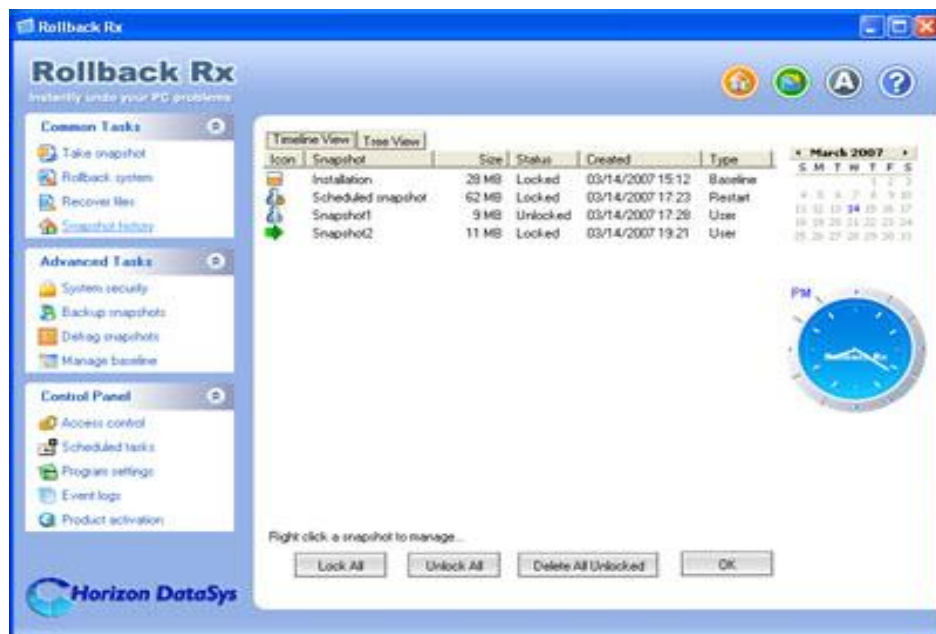
You might lock snapshots to prevent it from been accidentally deleted or removed by program settings. To delete a locked snapshot, you have to unlock it first

1. Right click the Rollback Rx icon in the system tray. Select "Open Rollback Rx" from the popup menu. You will need a user name and password to log in the Application Console if the Rollback Rx access control is enabled.

Chapter 7



2. In the Application Console, under the Common Tasks menu, click on "Snapshot history". The right-hand panel will display all the available snapshots. The current snapshot you are in is indicated by a big green arrow.

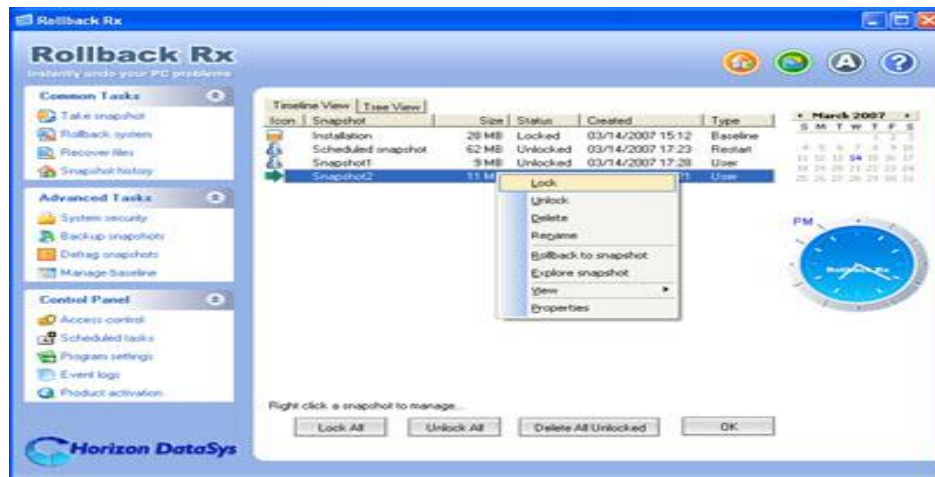


Instantly undo your PC problems

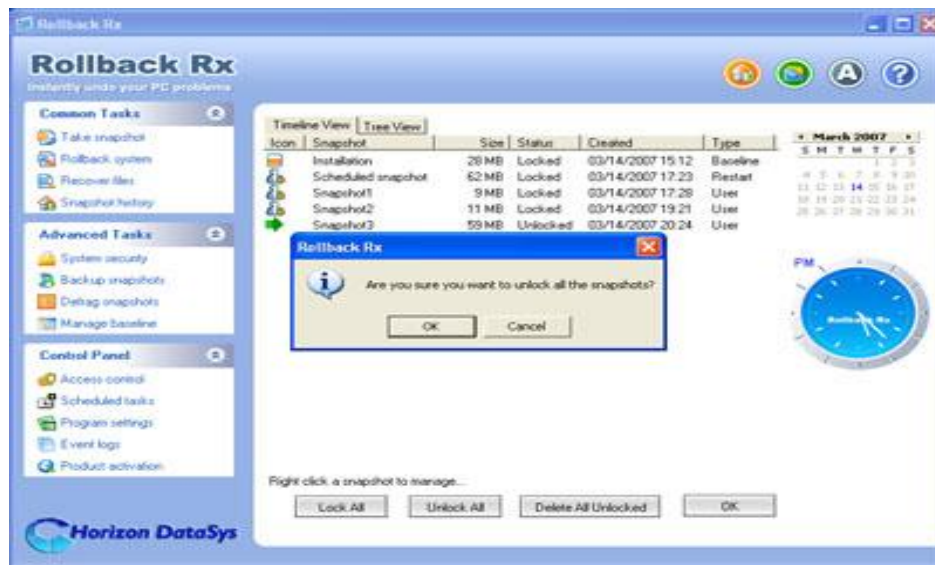
Chapter 7



3. Right click a snapshot to bring up the popup menu and select "Lock/Unlock". To lock/unlock multiple snapshots at a time, hold down Ctrl key while you select snapshots.



4. You can also use the Lock All/Unlock All buttons to lock/unlock all the snapshots.



Chapter 7



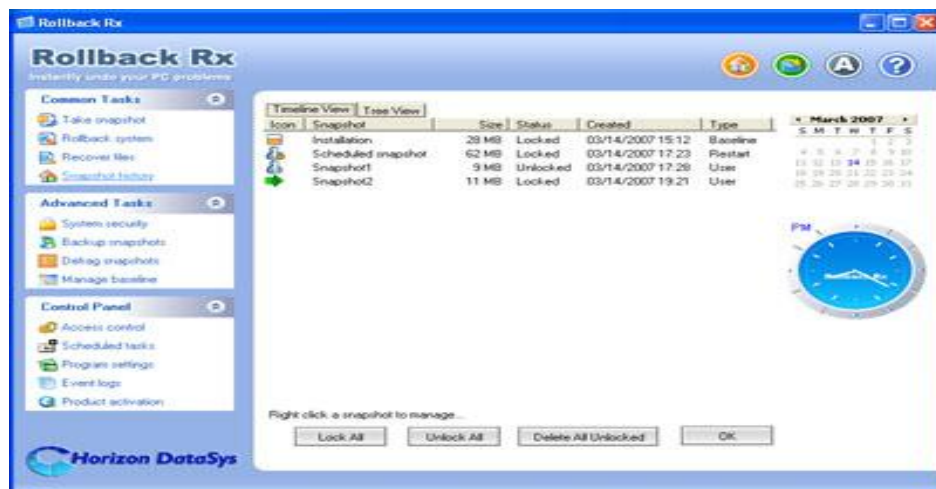
Rename Snapshots

To rename a snapshot:

1. Right click the Rollback Rx icon in the system tray. Select "Open Rollback Rx" from the popup menu. You will need a user name and password to log in the Application Console if the Rollback Rx access control is enabled.



2. In the Application Console, under the Common Tasks menu, click on "Snapshot history". The right-hand panel will display all the available snapshots. The current snapshot you are in is indicated by a big green arrow.

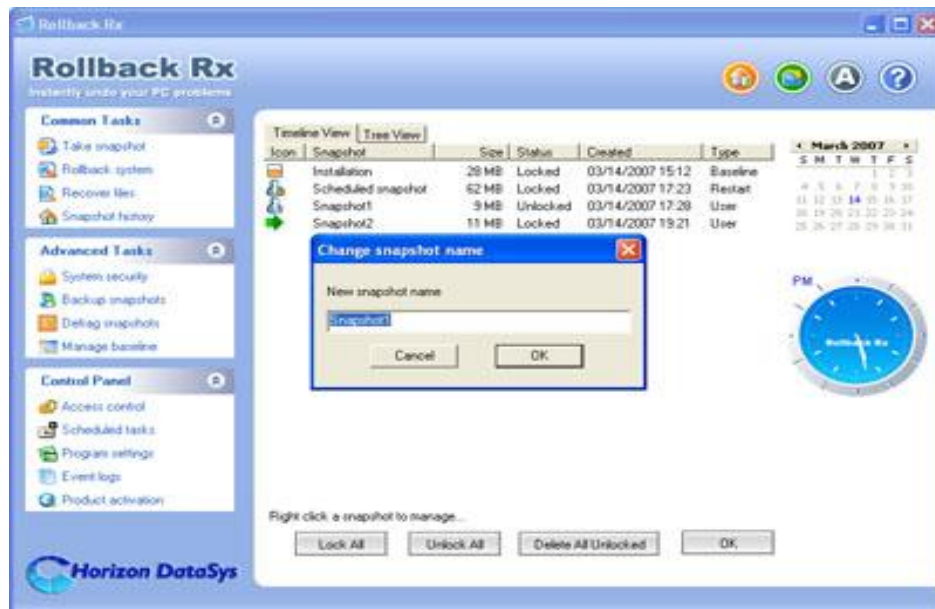


Instantly undo your PC problems

Chapter 7



3. Right click a snapshot and select "Rename" from the popup menu.

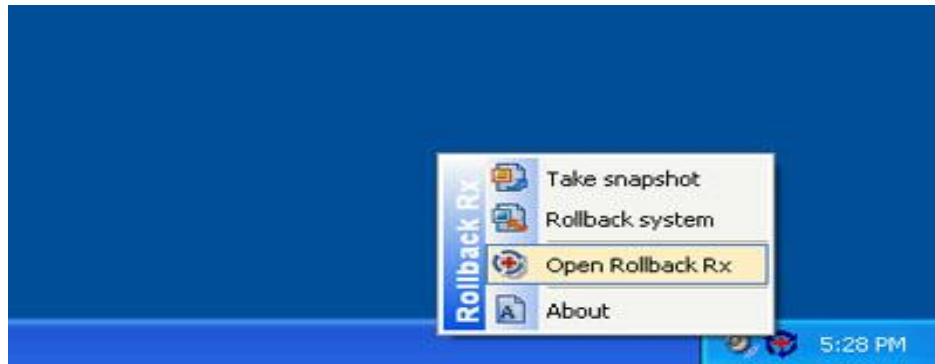


Defrag Snapshots

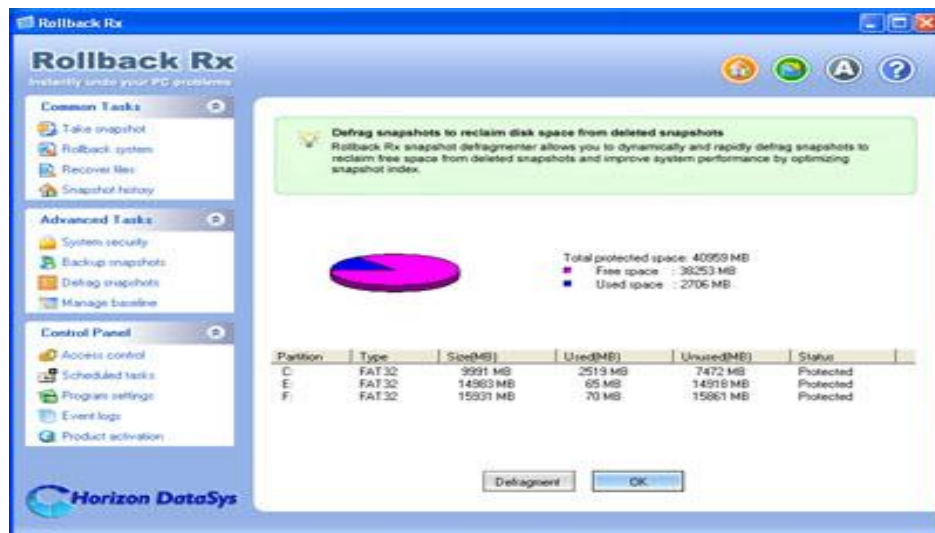
If you have taken or removed many snapshots, You need to defrag snapshots to reclaim disk space and improve system performance.

1. Right click the Rollback Rx icon in the system tray. Select "Open Rollback Rx" from the popup menu. You will need a user name and password to log in the Application Console if the Rollback Rx access control is enabled.

Chapter 7



2. In the Application Console, under the Advanced Tasks menu, click on "Defrag snapshots". Click on "Defragment" to start defrag. It might take some time to defrag all snapshots (depends on how many snapshots you have and what it was defragged last time).

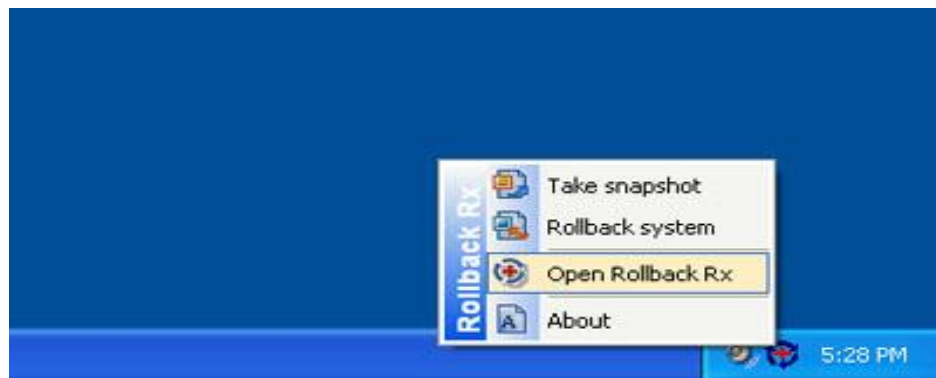


It's important to defrag snapshots and defrag them often.

Explore Snapshots

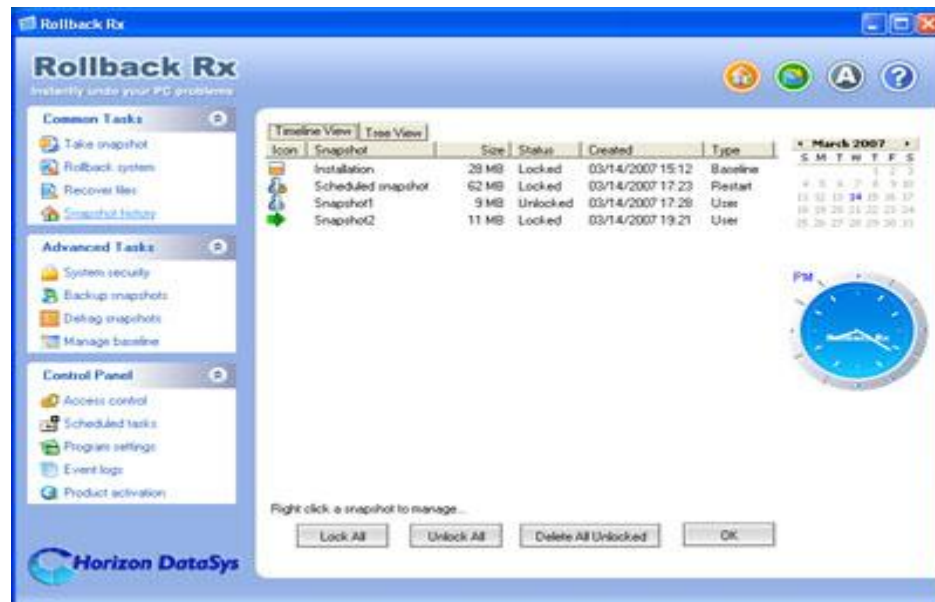
You can mount a snapshot as virtual drives and explore it as local drives to recover files. To explore a snapshot:

1. Right click the Rollback Rx icon in the system tray. Select "Open Rollback Rx" from the popup menu. You will need a user name and password to log in the Application Console if the Rollback Rx access control is enabled.

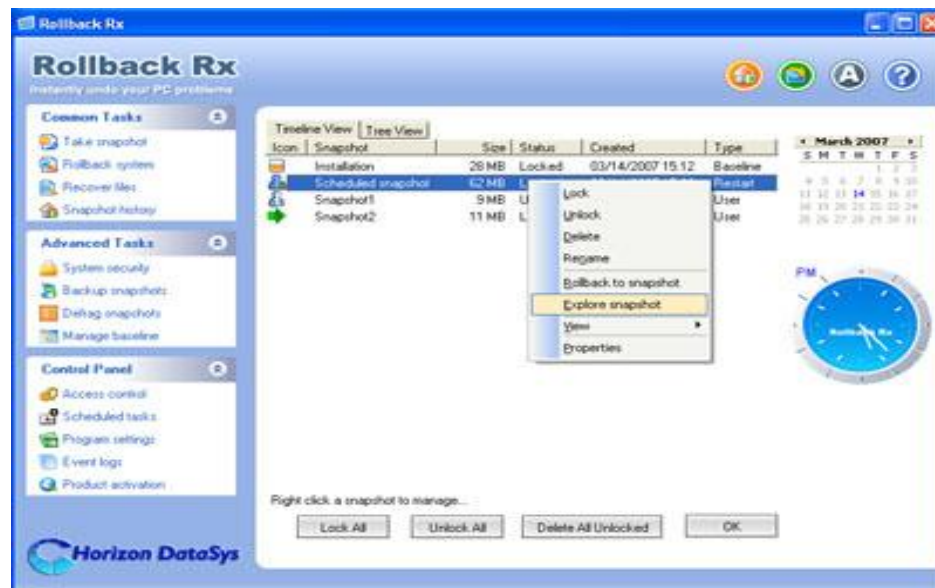


2. In the Application Console, under the Common Tasks menu, click on "Snapshot history". The right-hand panel will display all the available snapshots. The current snapshot you are in is indicated by a big green arrow.

Chapter 7



3. Right click a snapshot and select "Explore snapshot" from the popup menu.

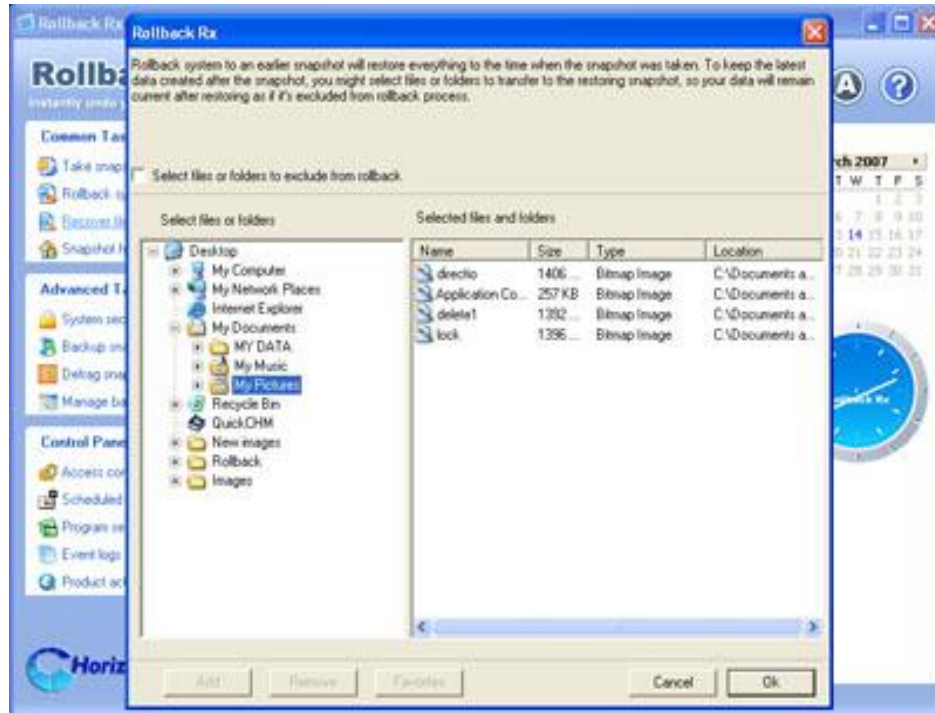


Instantly undo your PC problems

Chapter 7



4. Rollback Rx will create virtual drive(s) for the selected snapshot. You can open and explore the virtual drive(s) as local disk in My Computer. Click on "Dismiss virtual Drive(s)" to dismount the snapshot or rebooting the PC will dismount the snapshot as well.



Backup Snapshots

Rollback Rx snapshots work like magic, you can take a snapshot of PC in less than 5 seconds, you can restore the PC to a snapshot in less than 10 seconds. It's fast, easy, powerful and it uses very little resources. Rollback Rx made these impossible possible by protecting system and data in real time without creating and carrying duplicated copy of the system, this is the strength of Rollback Rx Snapshots. But on the flip side of the coin, this is also Rollback Rx's

Instantly undo your PC problems

Chapter 7



weakness, what if I want to have a backup of everything to feel secure? What if my hard drive fails, how can I recover my system and data on a new hard drive?

Rollback Rx Snapshot Backup answers these questions by providing a simple and effective system backup solution, it allows you to select a snapshot and back it up to an image file. The image file contains 100% of system, programs, user data and settings included in the snapshot. The image file can be stored on external drives and used to recover a new hard drive in the event of hard drive failure.

For details on how to backup snapshots and restore snapshot backups, refer to Rollback Rx Snapshot Backup Help.

Rollback Rx Access Control

To prevent unauthorized users from rollback your system or recover your hidden files, you can password protect access to Rollback Rx consoles by enabling Access control. Access Control user accounts and password apply to both Rollback Rx Application Console and Subsystem Console.

Enable Rollback Rx Access Control during Setup

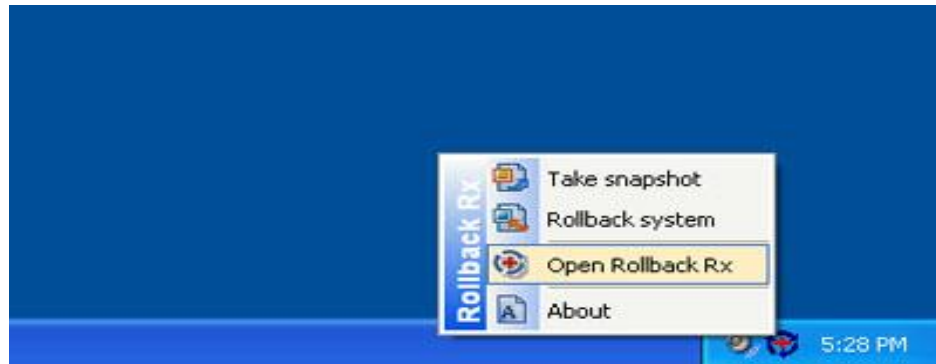
To enable Rollback Rx Access Control during setup, you need to use either Custom Setup or Advanced Setup:

1. To enable Access Control in the Custom Setup. Select the enable Access Control checkbox and provide a password for the administrator account. You must remember this password. You will need it to access the Rollback Rx program consoles. You also need this password to uninstall Rollback Rx.
2. To enable Access Control in the Advanced Setup, you need to use the Advanced Setup Configuration Wizard (ASCW) provided in the support folder on the program CD. For more information on ASCW, refer to the Rollback Rx deployment whitepaper in the document folder on the program CD.

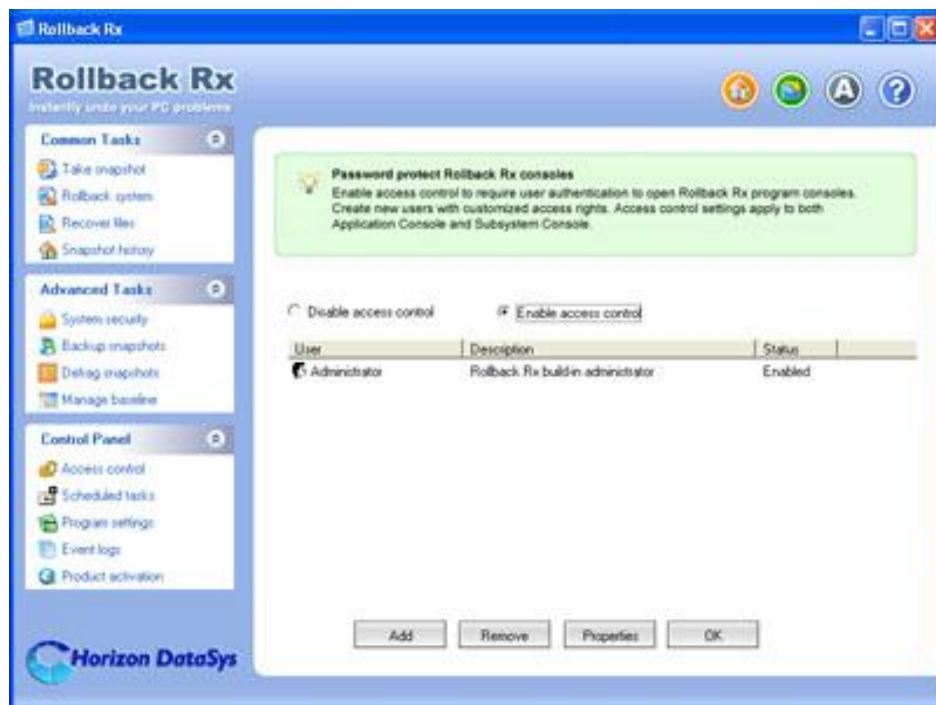
Enable Rollback Rx Access Control After Setup

1. To enable Rollback Rx Access Control after setup, right click the Rollback Rx icon in the system tray. Select "Open Rollback Rx" from the popup menu.

Chapter 8



2. In the Application Console, under the Control Panel menu, click on "Access Control". The right-hand panel will display the Access Control configuration window. Check "Enable access control" checkbox and then click on "Apply".



Chapter 8



3. You will be prompted to set a password for the administrator account. You must remember this password. You will need it to access the Rollback Rx program consoles. You also need this password to uninstall Rollback Rx.



If you have installed Rollback Rx using the Default Setup, access control is disabled by default

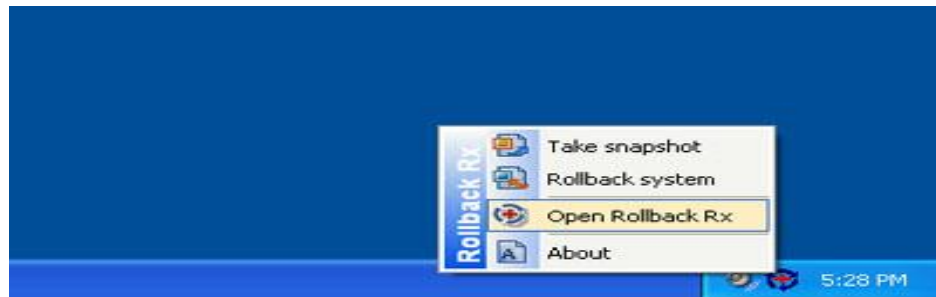
Create New Users

Enable Rollback Rx Access Control only activates the default administrator account. The administrator account has access rights to all the program features. You might just want a user to have access to certain features of the program. Rollback Rx allows you to create new users and customize their rights accordingly.

Chapter 8



1. Right click the Rollback Rx icon in the system tray. Select "Open Rollback Rx" from the popup menu. You will need to provide the administrator user name and password to access the Application Console.



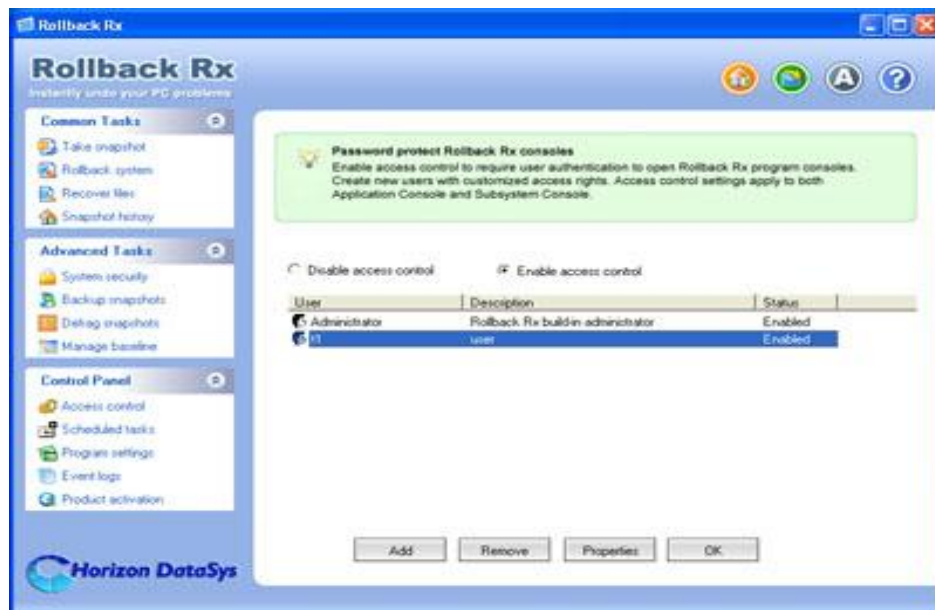
2. In the Application Console, under the Control Panel menu, click on "Access Control". The right-hand panel will display the Access Control configuration windows. Click on "Add" to create a new user account. Type in the information for the new user. You can grant access rights to the new user. Click on "Add" to create the new user.



Chapter 8



3. The new user will be listed in the Access Control window. As the new user logs into the Application Console. He will only have access rights to the features he was granted. He will notice some of the features are disabled for him.



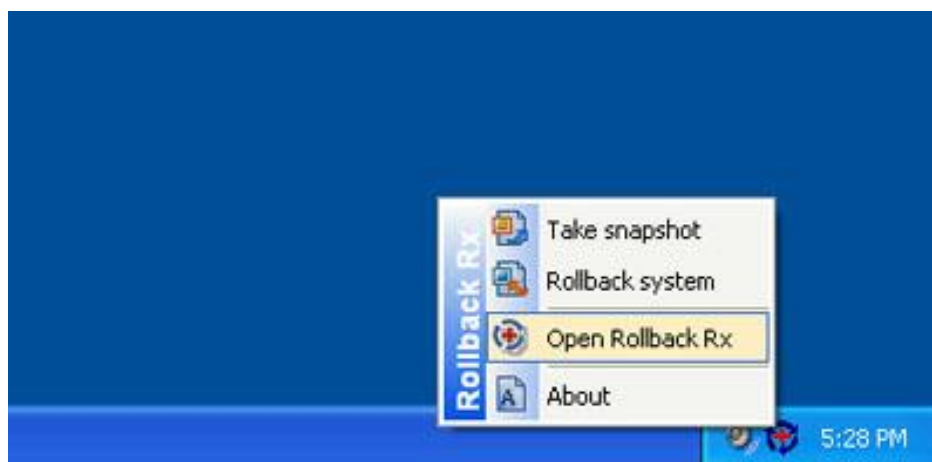
Remove "delete snapshots" right from a user will also deny him from locking or unlocking snapshots.

System Security

Rollback Rx system security prevents unauthorized access to your system and data by password protect Windows startup and encrypt snapshots. it secures your system and data from data thief even if the PC is stolen. **To engage Rollback Rx system security, you must enable Rollback Rx access control first. System security uses the same user accounts and passwords provided by access control.**

Enable Rollback Rx System Security

1. To enable Rollback Rx system security, right click the Rollback Rx icon in the system tray. Select "Open Rollback Rx" from the popup menu. You need to provide the administrator user account and password to login to the Application Console.



2. In the Application Console, under the Advanced Tasks menu, click on "System security". The right-hand panel will display the system security settings. There you might set the following security settings:

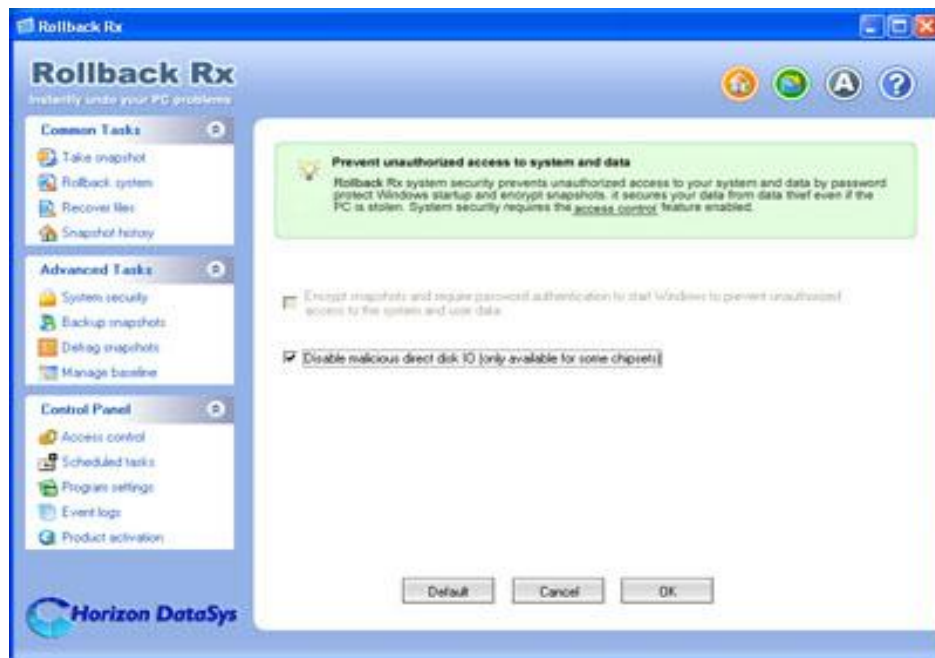
A. Encrypt snapshots and require password authentication to start Windows to prevent unauthorized access to the system and data.

B. Disable malicious direct disk IO. * Rollback Rx, like all other software based system protection and recovery software, uses Windows kernel mode file filter drivers to collaborate with Windows IO system to monitor and protect data. By Windows design, all programs working in Windows should process its IO through Windows IO system, therefore the IOs are properly monitored by 3rd party filter drivers.

Chapter 8



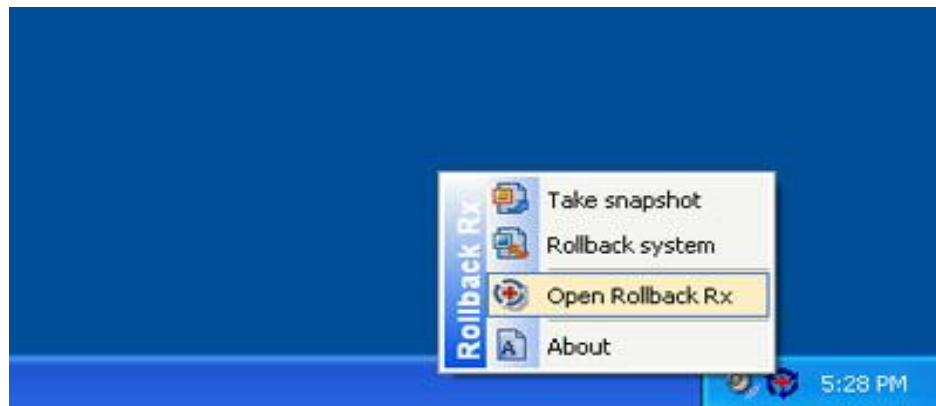
What if malicious software that tries to write to the hard drive directly without going through Windows IO system and therefore bypass all filter drivers? It will defeat the purpose of 3rd party filter drivers and most likely damages the system. Windows tries its best to lock such malicious direct disk IOs. Rollback Rx provides an extra layer of protection against such malicious disk IOs by using an undocumented hard drive based algorithm. **Unfortunately this undocumented algorithm only works on some chipsets. We do not recommend you to turn on this option unless you are sure that you are having problems with malicious direct disk IOs.**



Update Baseline

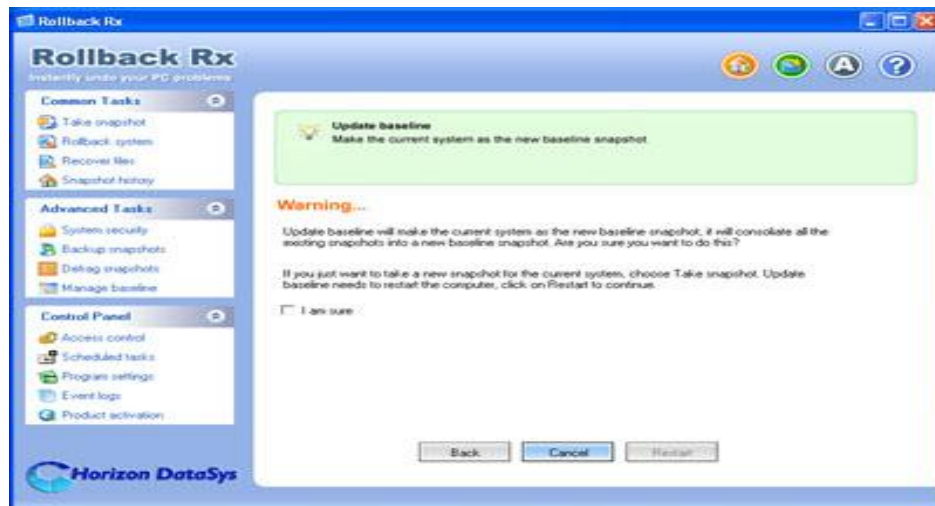
The very first snapshot created during the setup of Rollback Rx is the baseline snapshot. It is the foundation of all other snapshots created after. After upgrading the operating system with new service pack or some other major changes on your computer, you might want to make the current system as the new baseline.

1. Right click the Rollback Rx icon in the system tray. Select "Open Rollback Rx" from the popup menu. You will need a user name and password if the Rollback Rx program access control is enabled.



2. In the Application Console, under the Advanced Tasks menu, click on "Manage baseline" and then select Update Baseline. The computer needs to restart to reset to the baseline.

Chapter 9



Update baseline will consolidate all the existing snapshots into the new baseline. All snapshot history will be vanished after running update baseline. If you just want to take a new snapshot of the current system, select take snapshot instead.

Reset To Baseline

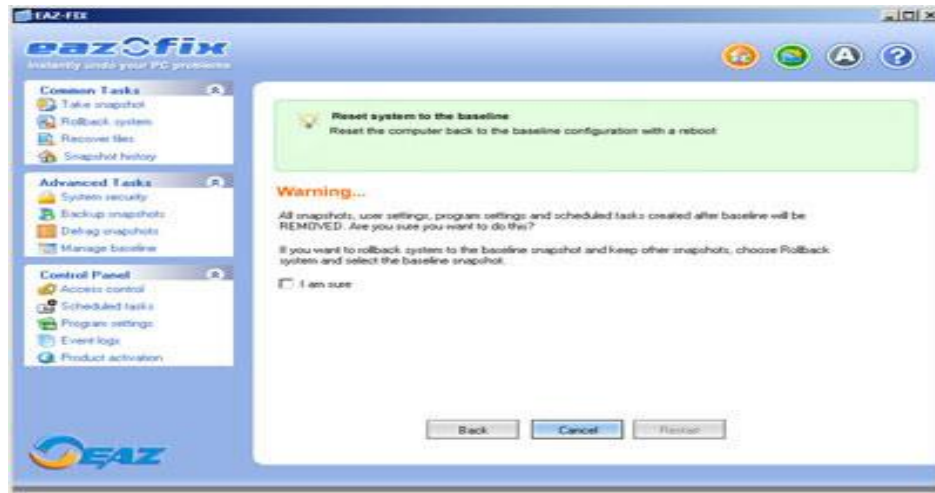
The very first snapshot created during setup is the baseline snapshot. It is most likely the base configuration of your computer. Over a period of time, you may have taken new snapshots containing new programs or data; but at the end of the day, you might just want to return the system back to the nice and neat condition where it is all started from. Reset to baseline allows you to return the computer back to the baseline configuration with a reboot.

1. Right click the Rollback Rx icon in the system tray. Select "Open Rollback Rx" from the popup menu. You will need a user name and password if the Rollback Rx program access control is enabled.

Chapter 9



2. In the Application Console, under the Advanced Tasks menu, click on "Manage baseline" and then select Reset to Baseline. The computer needs to restart to reset to the baseline.



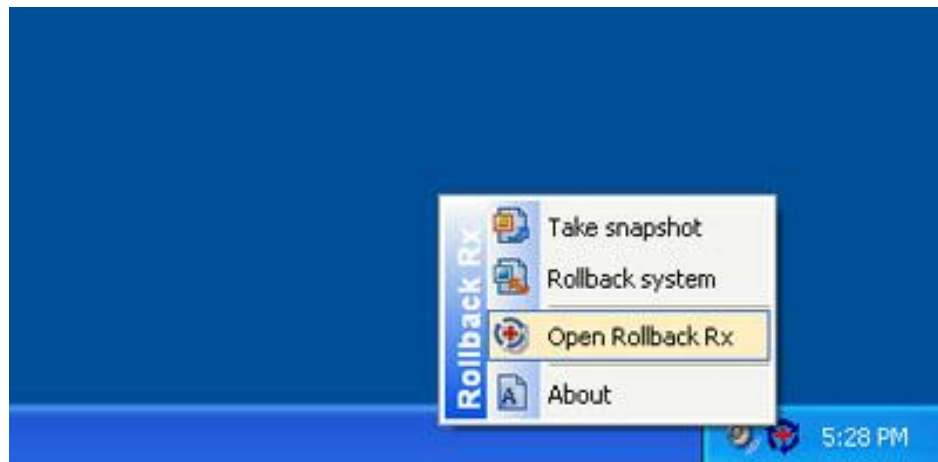
All the snapshots taken after the baseline snapshot will be permanently deleted after you reset to the baseline. Please backup important data before running reset to baseline. If you want to rollback system to the baseline snapshot and keep all other snapshots, select rollback system instead.

Rollback System with Scheduled Tasks

You can schedule Rollback Rx to automatically rollback system with one of the 7 schedule settings.

- Schedule Rollback Rx to rollback system on restart
- Schedule Rollback Rx for system restore on log off
- Schedule Rollback Rx for a one-time system rollback
- Schedule Rollback Rx for hourly system rollback
- Schedule Rollback Rx for daily system rollback
- Schedule Rollback Rx for weekly system rollback
- Schedule Rollback Rx for monthly system rollback

1. Right click the Rollback Rx icon in the system tray. Select "Open Rollback Rx" from the popup menu. You will need a user name and password to log into Application Console if the Rollback Rx access control is enabled.

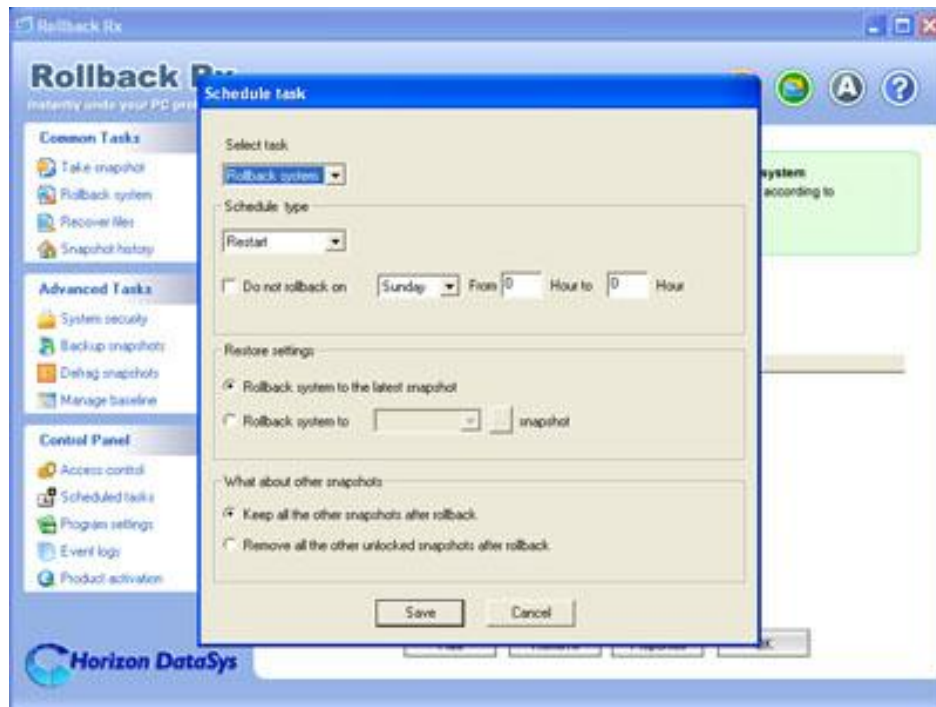


2. In the Application Console, under the Control Panel Task menu, click on the "Scheduled tasks" and "Add" to bring up the new schedule settings window, Select "Rollback system"

Chapter 10



in the schedule task drop-down list; Select "your restore schedule type" in the schedule type drop-down list.

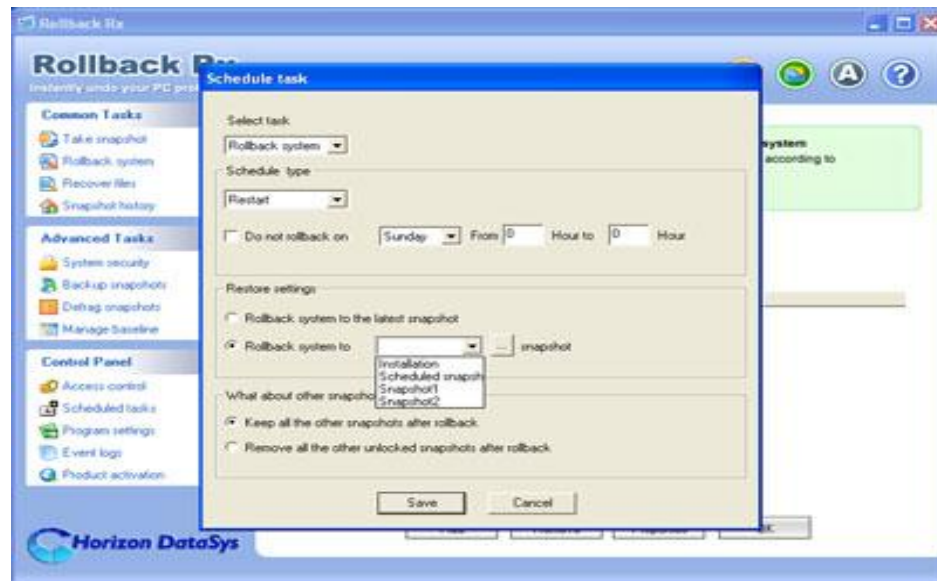


3. For the restore settings, you can select which snapshot you want to rollback the system to. You can select to a). rollback system to the latest snapshot, b). restore system to a specific snapshot. You can also choose what to do with other snapshots after rollback the system. a). keep all the other snapshots. b). remove all the other unlocked snapshots. Click on "Save" to save the new schedule setting.

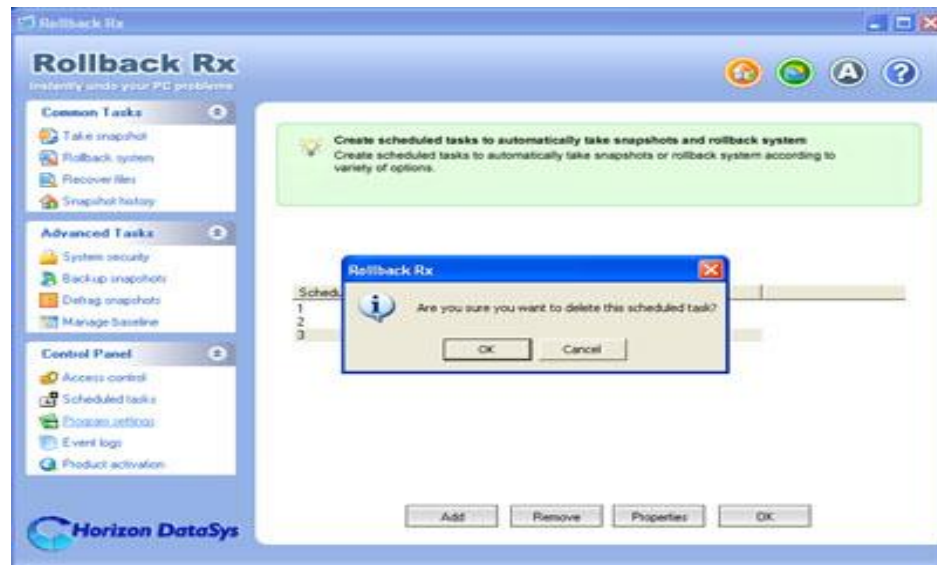
Chapter 10



SCHEDULED TASKS



4. You will then see a new scheduled task entry. You can select to view the properties of the scheduled task or delete it.

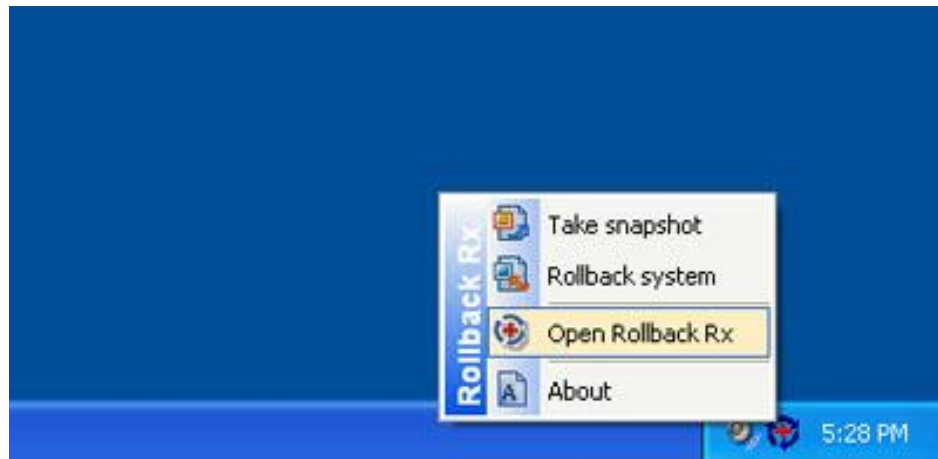


Take Snapshots with Scheduled Tasks

You can schedule Rollback Rx to automatically take new snapshots with one of the 7 schedule settings.

- Schedule Rollback Rx to take new snapshots on restart
- Schedule Rollback Rx to take a one-time new snapshot
- Schedule Rollback Rx to take hourly new snapshots
- Schedule Rollback Rx to take daily new snapshots
- Schedule Rollback Rx to take weekly new snapshots
- Schedule Rollback Rx to take monthly new snapshots
- Schedule Rollback Rx to take event based snapshots

1. Right click the Rollback Rx icon in the system tray. Select "Open Rollback Rx" from the popup menu. You will need a user name and password to log in Application Console if the Rollback Rx access control is enabled.

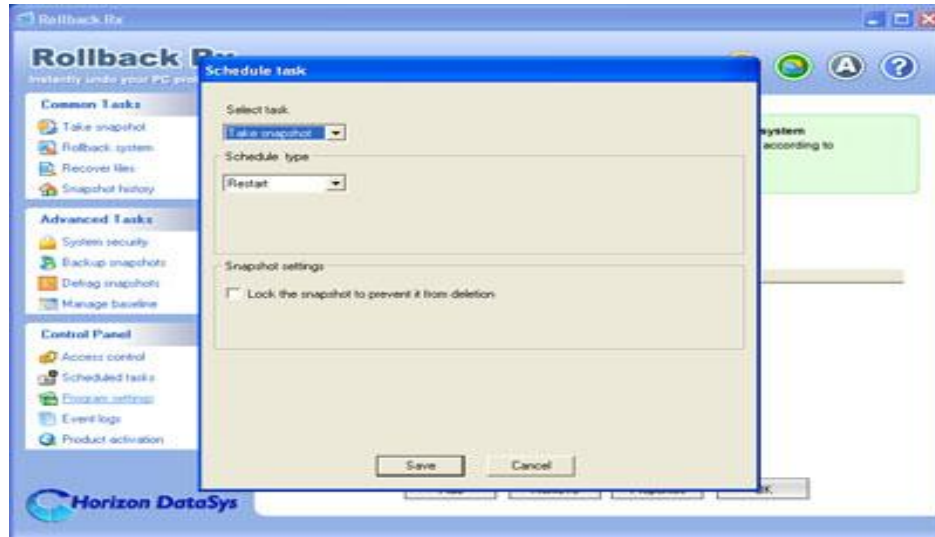


2. In the Application Console, under the Control Panel Task menu, click on the "Scheduled tasks" and "Add" to bring up the new schedule settings window, Select "Take snapshot" in

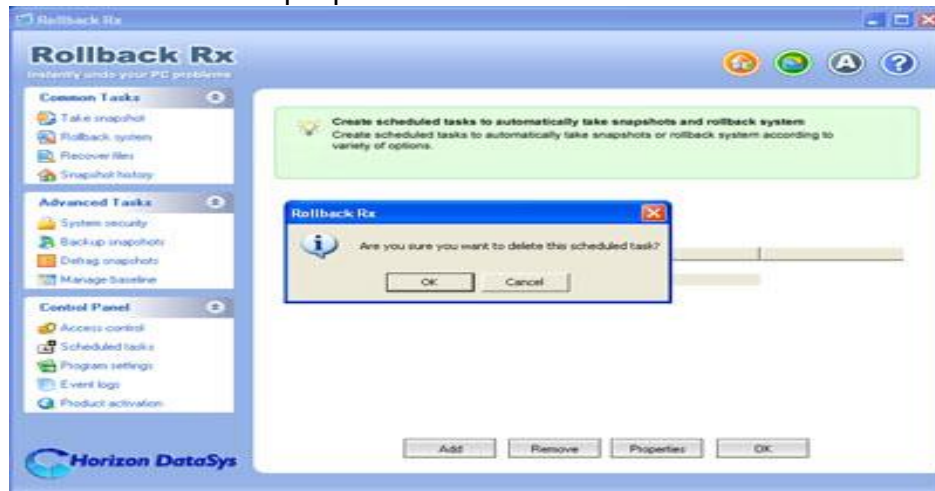
Chapter 10



the schedule task drop-down list; Select "your restore schedule type" in the schedule type drop-down list.

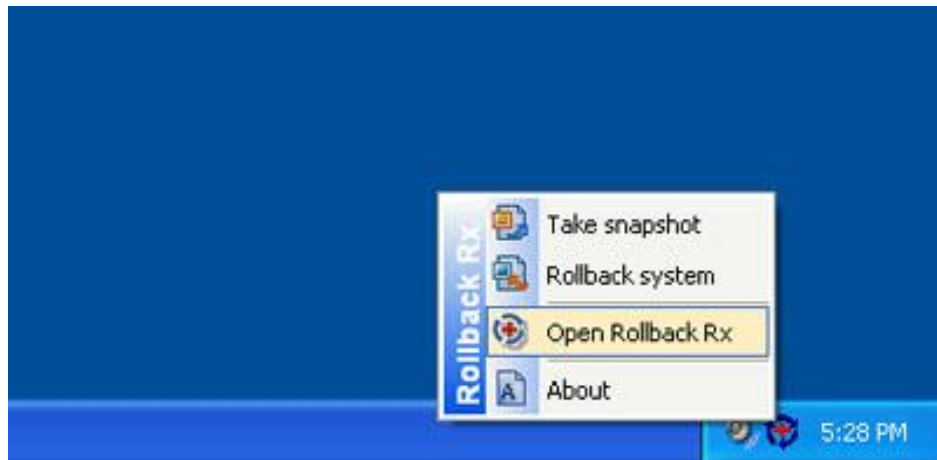


3. You will then see a new scheduled task entry. You can select to view the properties of the scheduled task or delete it.



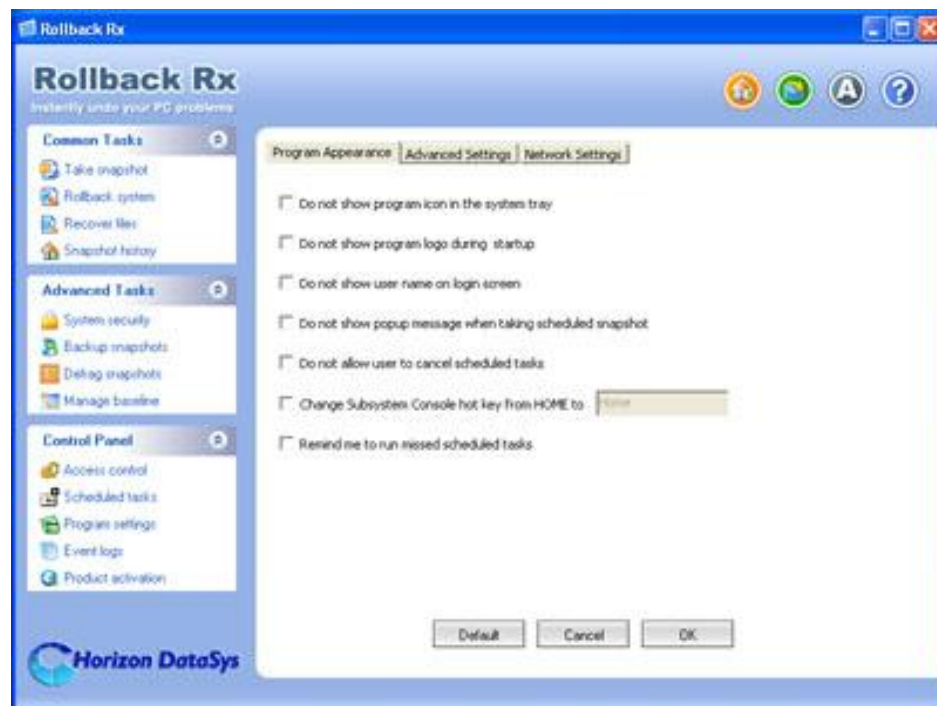
Program Appearance

1. To customize Rollback Rx program appearance, right click the Rollback Rx icon in the system tray. Select "Open Rollback Rx" from the popup menu. You will need a user name and password if the Rollback Rx access control is enabled.



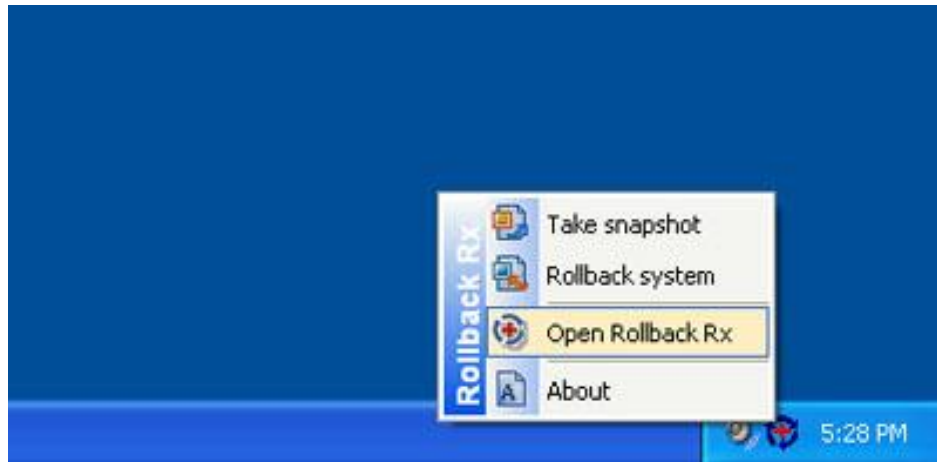
2. In the Application Console, under the Control Panel menu, click on "Program settings". The right-hand panel will display the program settings options, click on the "Program Appearance" tab to configure the program appearance. There you can customize Rollback Rx to:

- Do not show program icon in the system tray
- Do not show program logo during startup
- Do not show user name in logon screen
- Do not show popup message when taking scheduled snapshots
- Do not allow user to cancel scheduled tasks
- Change Subsystem Console hotkey from HOME to something else
- Remind me about missed scheduled tasks



Advanced Settings

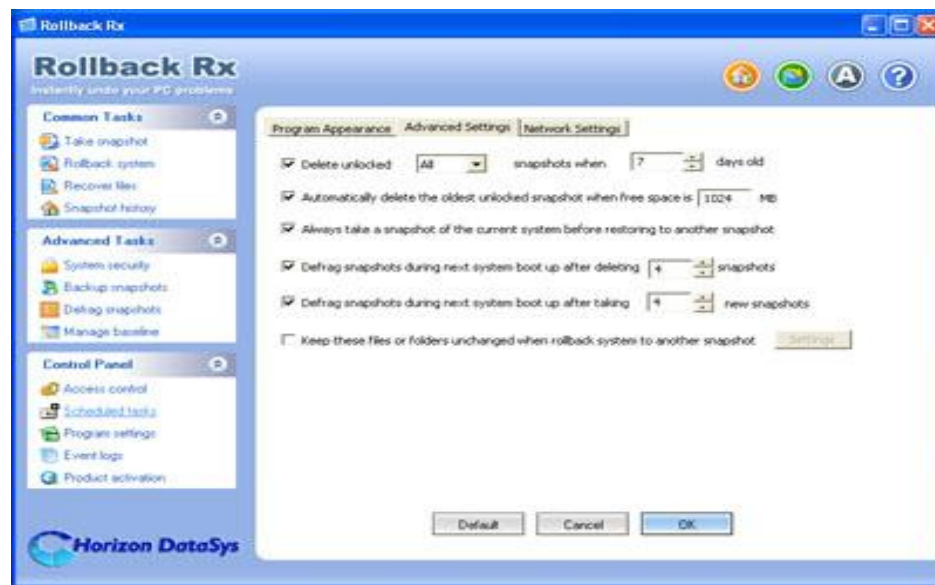
1. To configure advanced Rollback Rx program settings, right click the Rollback Rx icon in the system tray. Select "Open Rollback Rx" from the popup menu. You will need a user name and password if the Rollback Rx access control is enabled.



2. In the Application Console, under the Control Panel menu, click on "Program settings". The right-hand panel will display the program settings options, click on the "Advanced settings" tab to configure the program settings. There you can customize Rollback Rx to:

- Delete unlocked snapshots when X days old
- Always take a snapshot of the current system before rollback system
- Defrag snapshots during next startup to reclaim free space and improve system performance after deleting X snapshots
- Defrag snapshots during next startup to reclaim free space after taking X new snapshots
- Keep these files and folders unchanged when restring system to another snapshot
- Automatically delete the oldest unlocked snapshot when free space is below X MB

Chapter 11



Network Settings

1. To connect Rollback Rx Professional to a remote management console, right click the Rollback Rx icon in the system tray. Select "Open Rollback Rx" from the popup menu. You will need a user name and password if the Rollback Rx access control is enabled.



Instantly undo your PC problems

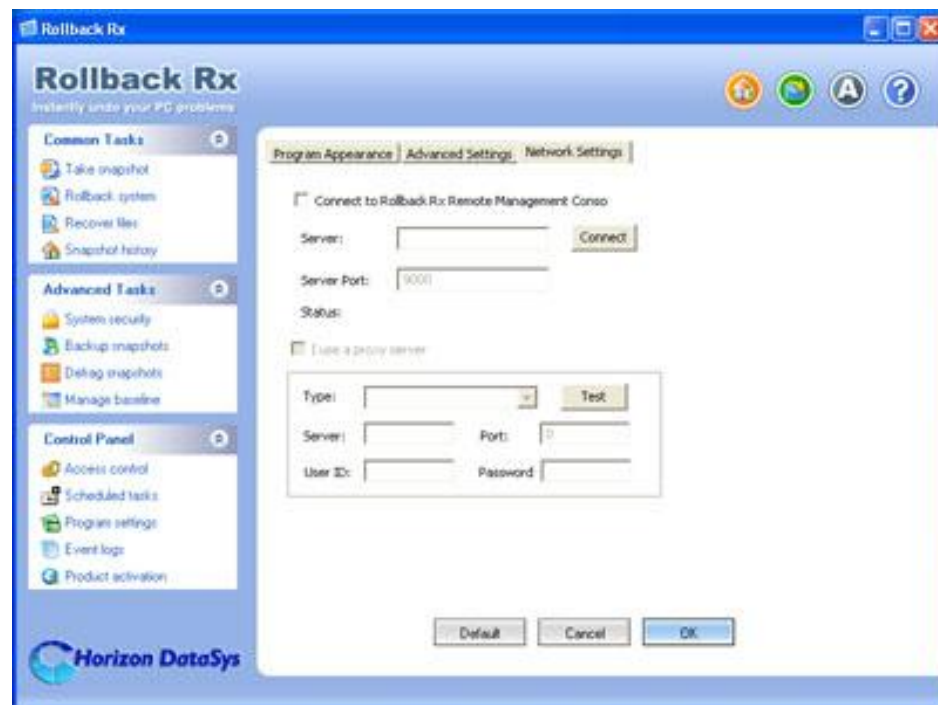
Chapter 11



2. In the Application Console, under the Control Panel menu, click on "Program settings". The right-hand panel will display the program settings options, click on the "Network settings" tab to configure the network settings, you need to provide:

- Remote management Console 's server name or IP
- Remote management Console 's server port

If your computer is behind a proxy or firewall, you need to provide proxy server's settings in order to connect to the remote management console server.



Command Line Switches

Rollback Rx Professional provides you a set of command-line switches to take snapshot and restore system with batch files or network scripts.

The following table defines the Rollback Rx Professional command line switches:

■ Rollback System

Shieldcmd.exe /restore

/baseline //Restore to baseline snapshot.
/current //Restore to current snapshot.
/n "snapshot name" //Restore to a snapshot by name.
/t "08/11/2004 18:00" //Restore system to the snapshot that is closest to 08/11/2005 18:00.
/run "path to the executable" //Spawn a process after the restore.
[/u "user"] //user name, only required if access control is enabled.
[/p "password"] //user password, only required if access control is enabled

■ Manage the Baseline

Shieldcmd.exe

/resetbase //Reset PC back to the baseline snapshot.
/updatebase //Update the current system as the new baseline.
[/u "user"] //user name, only required if access control is enabled.
[/p "password"] //user password, only required if access control is enabled.

■ Take Snapshot

Shieldcmd.exe /snapshot

/n "snapshot name" //Take a new snapshot with given snapshot name.

[/d "snapshot description"] //Take a new snapshot with given description, optional.

/overwrite //Take a new snapshot with given snapshot name and overwrite the existing snapshot with the same name.

[/u "user"] //user name, only required if access control is enabled.

[/p "password"] //user password, only required if access control is enabled.

■ Program Settings

Shieldcmd.exe

/exclude /f "path to file or folder" //Exclude the file or folder from rollback.

/excludedel //Delete all files and folder exclusion list.

/excludelist //Output the files and folder exclusion list.

/snapshotlist //Output all the existing snapshot information.

/hideicon //Hide Rollback Rx system tray icon.

/showicon //Show Rollback Rx tray icon.

/import "path to setup.cfg file" //Import program settings from setup.cfg.

[/u "user"] //user name, only required if access control is enabled.

[/p "password"] //user password, only required if access control is enabled.

■ Snapshot Management

Shieldcmd.exe

/delete /n "snapshot name" //Delete an unlocked snapshot by name.

/delete /force /n "snapshot name" //Delete a snapshot by name regardless it's status (locked or unlocked)
/lock /n "snapshot name" //Lock a snapshot by name.
/lock /all //Lock all snapshots.
/unlock /n "snapshot name" //Unlock a snapshot by name.
/unlock /all //Unlock all snapshots.
[/u "user"] //user name, only required if access control is enabled.
[/p "password"] //user password, only required if access control is enabled.

■ Uninstall

Shieldcmd.exe

/uninstall current //Uninstall Rollback Rx to the current system.
/uninstall baseline //Uninstall Rollback Rx to the baseline snapshot.
[/u "user"] //user name, only required if access control is enabled.
[/p "password"] //user password, only required if access control is enabled.

■ Command Line Help

Shieldcmd.exe /? or Shieldcmd.exe /help
//Open Rollback Rx help file



User information in [] are only required if the access control is enabled.

Support Options

Horizon DataSys, Inc is committed to provide satisfying support and excellent service to our valued customers. Our goal is to provide you with professional assistance in the use of our software through the variety of methods including documentations, online or personal contacts. According to our experience with customers, most of their questions can be answered in our Frequently Asked Question or other various technical white papers. **Please check your questions in the F.A.Q. before proceeding with other support options.**

If you were not able to find answers to your questions in the Rollback Rx FAQ and knowledge base, you might go to Horizon DataSys web site support page for more product related documents, white papers and other information.

<http://www.horizondatasys.com/176422.ihtml>

You can also submit an online support case with Horizon DataSys technical support team through our online support forum.

<http://horizondatasys.helpdeskconnect.com/?cmd=addticket>

The Horizon DataSys customer service department can assist you with non-technical questions. Visit Horizon DataSys support and service web site to find your local customer service number to:

- Order an upgrade
- Request trial version programs
- Find a distributor in your area
- Update your registration information

Chapter 13



F.A.Q.

For a list of Frequently Asked Questions about Rollback Rx Professional, please visit:

<http://horizondatasys.helpdeskconnect.com/?cmd=faq>

Knowledge Base

Horizon DataSys online knowledge base contains general information about Horizon DataSys products and problems reported by users on various laptop and desktop computers. You can find answers for most of your questions or problems in the:

<http://horizondatasys.helpdeskconnect.com/?cmd=faq>

Help Desk

Horizon DataSys provides an easy to use
<http://horizondatasys.helpdeskconnect.com>

You can submit online support tickets and get response from our support technicians